

Product datasheet for **TA382550**

TIPIN Rabbit Polyclonal Antibody

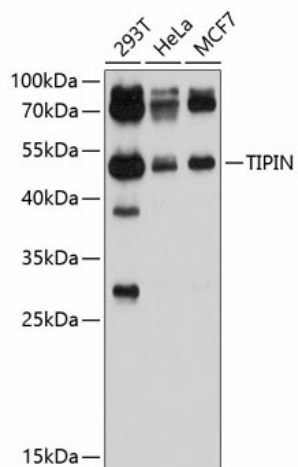
Product data:

Product Type:	Primary Antibodies
Applications:	WB
Recommended Dilution:	WB,1:500 - 1:2000
Reactivity:	Human, Mouse
Modifications:	Unmodified
Host:	Rabbit
Isotype:	IgG
Clonality:	Polyclonal
Immunogen:	Recombinant fusion protein containing a sequence corresponding to amino acids 1-301 of human TIPIN (NP_060328.2).
Formulation:	Buffer: PBS with 0.02% sodium azide,50% glycerol,pH7.3.
Concentration:	lot specific
Purification:	Affinity purification
Conjugation:	Unconjugated
Storage:	Store at -20°C. Avoid freeze / thaw cycles.
Stability:	Shelf life: one year from despatch.
Predicted Protein Size:	34kDa
Gene Name:	TIMELESS interacting protein
Database Link:	Entrez Gene 54962 Human Q9BVW5
Background:	The protein encoded by this gene is part of the replisome complex, a group of proteins that support DNA replication. It binds TIM, which is involved in circadian rhythm regulation, and aids in protecting cells against DNA damage and stress. Two pseudogenes and two transcript variants encoding different isoforms have been found for this gene.
Synonyms:	FLJ20516



[View online »](#)

Product images:



Western blot analysis of extracts of various cell lines, using TIPIN antibody (TA382550) at 1:1000 dilution. | Secondary antibody: HRP Goat Anti-Rabbit IgG (H+L) at 1:10000 dilution. | Lysates/proteins: 25ug per lane. | Blocking buffer: 3% nonfat dry milk in TBST. | Detection: ECL Basic Kit . | Exposure time: 10s.