

Product datasheet for **TA382541S**

TIMM8B Rabbit Polyclonal Antibody

Product data:

Product Type:	Primary Antibodies
Applications:	ELISA, ICC/IF, IHC, WB
Recommended Dilution:	WB, 1:500 - 1:2000 IHC-P, 1:50 - 1:100 IF/ICC, 1:50 - 1:100 ELISA, Recommended starting concentration is 1 µg/mL. Please optimize the concentration based on your specific assay requirements.
Reactivity:	Human, Mouse, Rat
Modifications:	Unmodified
Host:	Rabbit
Isotype:	IgG
Clonality:	Polyclonal
Formulation:	Buffer: PBS with 0.02% sodium azide, 50% glycerol, pH 7.3.
Concentration:	lot specific
Purification:	Affinity purification
Conjugation:	Unconjugated
Storage:	Store at -20°C. Avoid freeze / thaw cycles.
Stability:	Shelf life: one year from despatch.
Predicted Protein Size:	9kDa
Gene Name:	translocase of inner mitochondrial membrane 8 homolog B (yeast)
Database Link:	Entrez Gene 26521 Human Q9Y5J9



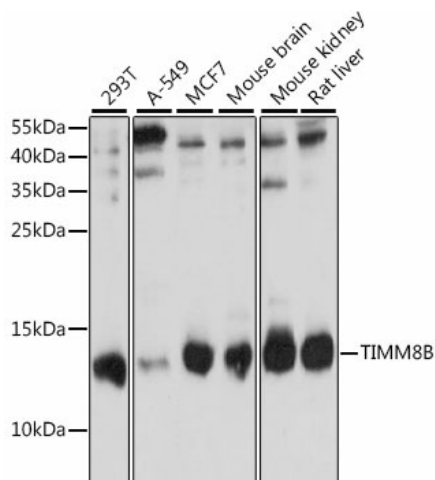
[View online »](#)

Background:

This gene encodes a member of a well-conserved family of proteins with similarity to yeast Tim mitochondrial import proteins. This gene is encoded by a nuclear gene and is transported into the intermembrane space of the mitochondrion. When formed into complexes, these proteins guide membrane-spanning proteins across the mitochondrial intermembrane space before they are added into the mitochondrial inner membrane. This gene is adjacent to succinate dehydrogenase, subunit D (SDHD), in which mutations have been found in affected members of families with hereditary paraganglioma.

Synonyms:

DDP2; DDPL; FLJ21744; MGC102866; MGC117373; TIM8B

Product images:


Western blot analysis of various lysates using TIMM8B Rabbit pAb (TA382541) at 1:1000 dilution.

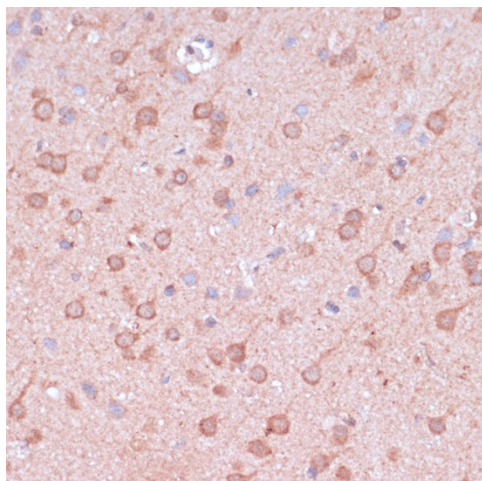
Secondary antibody: HRP-conjugated Goat anti-Rabbit IgG (H+L) (AS014) at 1:10000 dilution.

Lysates/proteins: 25µg per lane.

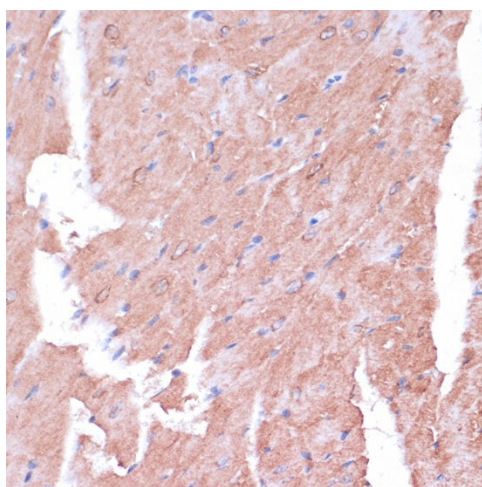
Blocking buffer: 3% nonfat dry milk in TBST.

Detection: ECL Basic Kit (RM00020).

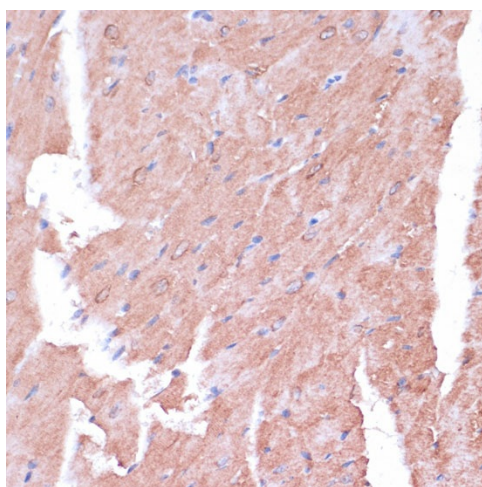
Exposure time: 90s.



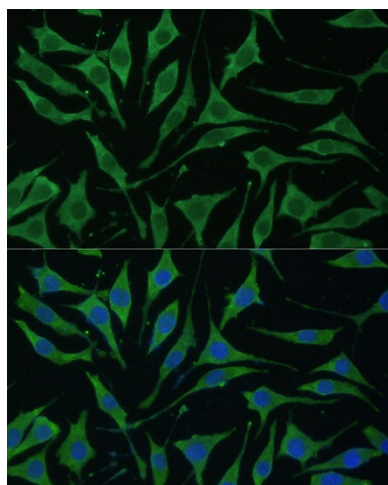
Immunohistochemistry analysis of paraffin-embedded Rat brain using TIMM8B Rabbit pAb (TA382541) at dilution of 1:100 (40x lens). Microwave antigen retrieval performed with 0.01M PBS Buffer (pH 7.2) prior to IHC staining.



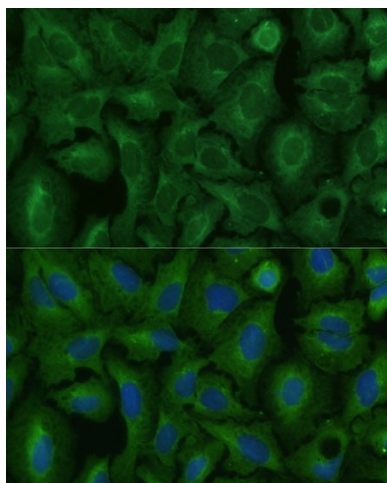
Immunohistochemistry analysis of paraffin-embedded Human breast cancer using TIMM8B Rabbit pAb ([TA382541]) at dilution of 1:100 (40x lens). Microwave antigen retrieval performed with 0.01M PBS Buffer (pH 7.2) prior to IHC staining.



Immunohistochemistry analysis of paraffin-embedded Mouse heart using TIMM8B Rabbit pAb ([TA382541]) at dilution of 1:100 (40x lens). Microwave antigen retrieval performed with 0.01M PBS Buffer (pH 7.2) prior to IHC staining.



Immunofluorescence analysis of L929 cells using TIMM8B Rabbit pAb ([TA382541]) at dilution of 1:100 (40x lens). Secondary antibody: Cy3-conjugated Goat anti-Rabbit IgG (H+L) (AS007) at 1:500 dilution. Blue: DAPI for nuclear staining.



Immunofluorescence analysis of U-2 OS cells using TIMM8B Rabbit pAb ([TA382541]) at dilution of 1:100 (40x lens). Secondary antibody: Cy3-conjugated Goat anti-Rabbit IgG (H+L) (AS007) at 1:500 dilution. Blue: DAPI for nuclear staining.