

Product datasheet for **TA382541**

TIMM8B Rabbit Polyclonal Antibody

Product data:

Product Type:	Primary Antibodies
Applications:	ICC/IF, IHC, WB
Recommended Dilution:	WB,1:500 - 1:2000 IHC,1:50 - 1:100 IF,1:50 - 1:100
Reactivity:	Human, Mouse, Rat
Modifications:	Unmodified
Host:	Rabbit
Isotype:	IgG
Clonality:	Polyclonal
Immunogen:	Recombinant fusion protein containing a sequence corresponding to amino acids 16-98 of human TIMM8B (NP_036591.2).
Formulation:	Buffer: PBS with 0.02% sodium azide,50% glycerol,pH7.3.
Concentration:	lot specific
Purification:	Affinity purification
Conjugation:	Unconjugated
Storage:	Store at -20°C. Avoid freeze / thaw cycles.
Stability:	Shelf life: one year from despatch.
Predicted Protein Size:	9kDa
Gene Name:	translocase of inner mitochondrial membrane 8 homolog B (yeast)
Database Link:	Entrez Gene 26521 Human Q9Y5J9



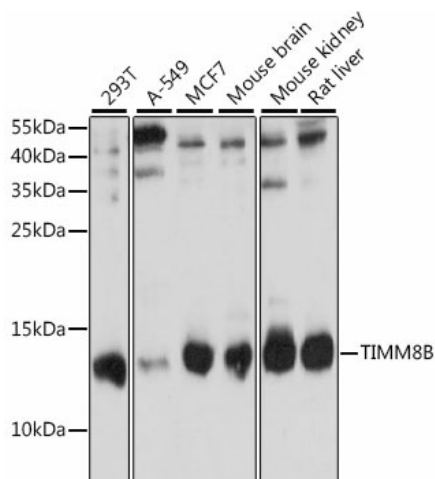
[View online »](#)

Background:

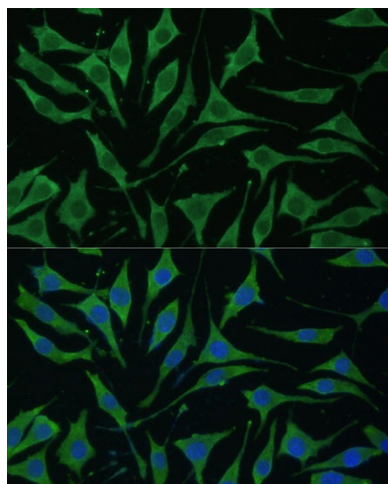
This gene encodes a member of a well-conserved family of proteins with similarity to yeast Tim mitochondrial import proteins. This gene is encoded by a nuclear gene and is transported into the intermembrane space of the mitochondrion. When formed into complexes, these proteins guide membrane-spanning proteins across the mitochondrial intermembrane space before they are added into the mitochondrial inner membrane. This gene is adjacent to succinate dehydrogenase, subunit D (SDHD), in which mutations have been found in affected members of families with hereditary paraganglioma.

Synonyms:

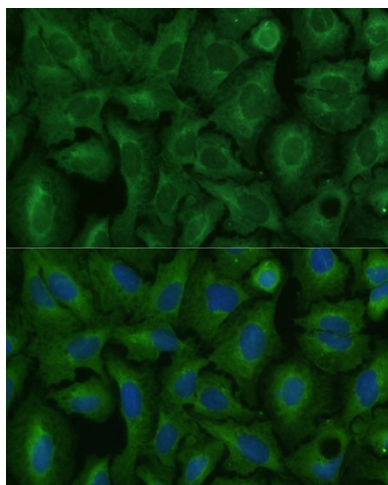
DDP2; DDPL; FLJ21744; MGC102866; MGC117373; TIM8B

Product images:

Western blot analysis of extracts of various cell lines, using TIMM8B antibody (TA382541) at 1:1000 dilution. | Secondary antibody: HRP Goat Anti-Rabbit IgG (H+L) at 1:10000 dilution. | Lysates/proteins: 25ug per lane. | Blocking buffer: 3% nonfat dry milk in TBST. | Detection: ECL Basic Kit. | Exposure time: 90s.



Immunofluorescence analysis of L929 cells using TIMM8B Polyclonal Antibody (TA382541) at dilution of 1:100 (40x lens). Blue: DAPI for nuclear staining.



Immunofluorescence analysis of U-2 OS cells using TIMM8B Polyclonal Antibody (TA382541) at dilution of 1:100 (40x lens). Blue: DAPI for nuclear staining.