

## Product datasheet for **TA382531S**

### TIMELESS Rabbit Polyclonal Antibody

#### Product data:

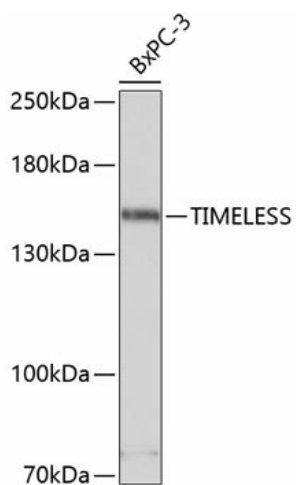
Product Type:	Primary Antibodies
Applications:	WB
Recommended Dilution:	WB,1:500 - 1:2000 IHC,1:50 - 1:200
Reactivity:	Human, Mouse
Modifications:	Unmodified
Host:	Rabbit
Isotype:	IgG
Clonality:	Polyclonal
Immunogen:	Recombinant fusion protein containing a sequence corresponding to amino acids 969-1208 of human TIMELESS (NP_003911.2).
Formulation:	Buffer: PBS with 0.02% sodium azide,50% glycerol,pH7.3.
Concentration:	lot specific
Purification:	Affinity purification
Conjugation:	Unconjugated
Storage:	Store at -20°C. Avoid freeze / thaw cycles.
Stability:	Shelf life: one year from despatch.
Predicted Protein Size:	138kDa
Gene Name:	timeless circadian clock
Database Link:	<a href="#">Entrez Gene 8914 Human Q9UNS1</a>
Background:	The protein encoded by this gene is highly conserved and is involved in cell survival after damage or stress, increase in DNA polymerase epsilon activity, maintenance of telomere length, and epithelial cell morphogenesis. The encoded protein also plays a role in the circadian rhythm autoregulatory loop, interacting with the PERIOD genes (PER1, PER2, and PER3) and others to downregulate activation of PER1 by CLOCK/ARNTL. Changes in this gene or its expression may promote prostate cancer, lung cancer, breast cancer, and mental disorders.



[View online »](#)

Synonyms: FLJ12640; FLJ20714; hTIM; TIM; TIM1; TIMELESS1

### Product images:



Western blot analysis of extracts of BxPC-3 cells, using TIMELESS antibody ([TA382531]) at 1:3000 dilution. | Secondary antibody: HRP Goat Anti-Rabbit IgG (H+L) at 1:10000 dilution. | Lysates/proteins: 25ug per lane. | Blocking buffer: 3% nonfat dry milk in TBST. | Detection: ECL Basic Kit . | Exposure time: 10s.