

Product datasheet for **TA382530S**

TIM 4 (TIMD4) Rabbit Polyclonal Antibody

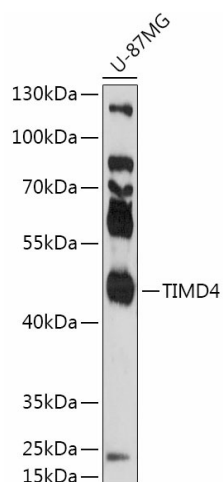
Product data:

Product Type:	Primary Antibodies
Applications:	ELISA, WB
Recommended Dilution:	WB, 1:500 - 1:1000 ELISA, Recommended starting concentration is 1 µg/mL. Please optimize the concentration based on your specific assay requirements.
Reactivity:	Human, Rat
Modifications:	Unmodified
Host:	Rabbit
Isotype:	IgG
Clonality:	Polyclonal
Formulation:	Buffer: PBS with 0.02% sodium azide, 50% glycerol, pH 7.3.
Concentration:	lot specific
Purification:	Affinity purification
Conjugation:	Unconjugated
Storage:	Store at -20°C. Avoid freeze / thaw cycles.
Stability:	Shelf life: one year from despatch.
Predicted Protein Size:	42kDa
Gene Name:	T-cell immunoglobulin and mucin domain containing 4
Database Link:	Entrez Gene 91937 Human Q96H15
Background:	Predicted to enable phosphatidylserine binding activity. Predicted to act upstream of or within apoptotic cell clearance. Predicted to be integral component of membrane.
Synonyms:	FLJ27515; SMUCKLER; TIM-4; TIM4; TIMD-4

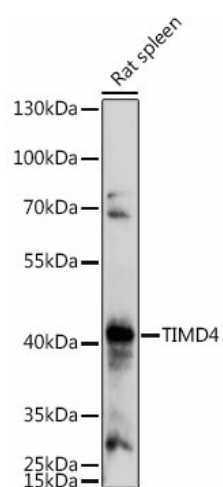


[View online »](#)

Product images:



Western blot analysis of lysates from U-87MG cells



Western blot analysis of lysates from Rat spleen