

## Product datasheet for **TA382509S**

### Thyroid Hormone Receptor alpha (THRA) Rabbit Polyclonal Antibody

#### Product data:

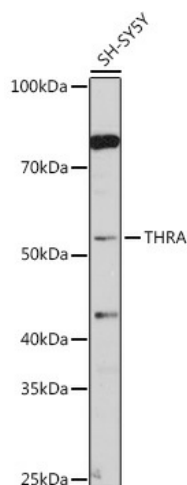
Product Type:	Primary Antibodies
Applications:	ELISA, IHC, WB
Recommended Dilution:	WB, 1:500 - 1:1000 IHC-P, 1:50 - 1:200 ELISA, Recommended starting concentration is 1 µg/mL. Please optimize the concentration based on your specific assay requirements.
Reactivity:	Human, Mouse, Rat
Modifications:	Unmodified
Host:	Rabbit
Isotype:	IgG
Clonality:	Polyclonal
Formulation:	Buffer: PBS with 0.02% sodium azide, 50% glycerol, pH 7.3.
Concentration:	lot specific
Purification:	Affinity purification
Conjugation:	Unconjugated
Storage:	Store at -20°C. Avoid freeze / thaw cycles.
Stability:	Shelf life: one year from despatch.
Predicted Protein Size:	55kDa
Gene Name:	thyroid hormone receptor, alpha
Database Link:	<a href="#">Entrez Gene 7067 Human P10827</a>
Background:	The protein encoded by this gene is a nuclear hormone receptor for triiodothyronine. It is one of the several receptors for thyroid hormone, and has been shown to mediate the biological activities of thyroid hormone. Knockout studies in mice suggest that the different receptors, while having certain extent of redundancy, may mediate different functions of thyroid hormone. Alternatively spliced transcript variants encoding distinct isoforms have been reported.



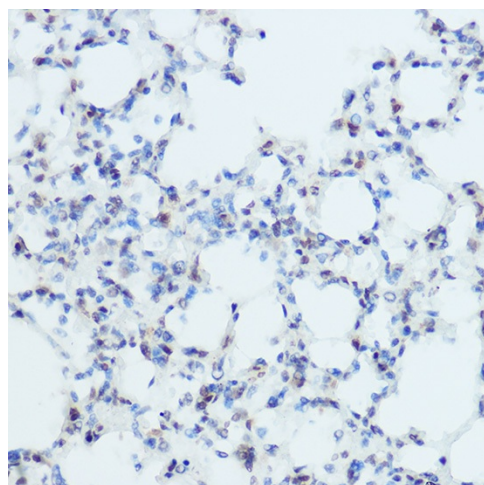
[View online »](#)

**Synonyms:**

AR7; c-ERBA-1; C-erbA-alpha; EAR-7; EAR-7.1/EAR-7.2; EAR7; ERB-T-1; ERBA; ERBA1; MGC000261; MGC43240; NR1A1; THRA1; THRA2; THRA3

**Product images:**


Western blot analysis of lysates from SH-SY5Y cells



Immunohistochemistry analysis of paraffin-embedded Mouse lung using THRA Rabbit pAb ([TA382509]) at dilution of 1:50 (40x lens). High pressure antigen retrieval performed with 0.01M Citrate Bufferr (pH 6.0) prior to IHC staining.