

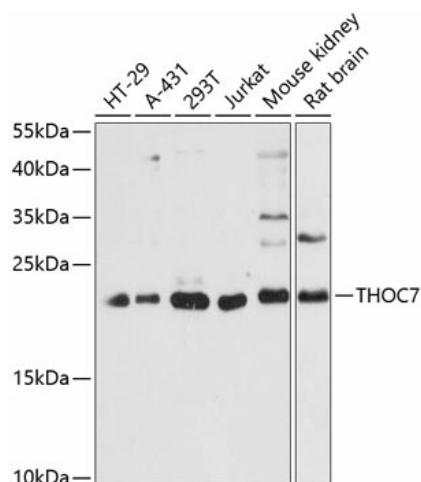
## Product datasheet for **TA382507S**

### THOC7 Rabbit Polyclonal Antibody

#### Product data:

Product Type:	Primary Antibodies
Applications:	ELISA, WB
Recommended Dilution:	WB, 1:500 - 1:2000 ELISA, Recommended starting concentration is 1 µg/mL. Please optimize the concentration based on your specific assay requirements.
Reactivity:	Human, Mouse, Rat
Modifications:	Unmodified
Host:	Rabbit
Isotype:	IgG
Clonality:	Polyclonal
Formulation:	Buffer: PBS with 0.02% sodium azide, 50% glycerol, pH 7.3.
Concentration:	lot specific
Purification:	Affinity purification
Conjugation:	Unconjugated
Storage:	Store at -20°C. Avoid freeze / thaw cycles.
Stability:	Shelf life: one year from despatch.
Predicted Protein Size:	24kDa
Gene Name:	THO complex 7
Database Link:	<a href="#">Entrez Gene 80145 Human Q6I9Y2</a>
Background:	Predicted to enable RNA binding activity. Involved in mRNA export from nucleus and viral mRNA export from host cell nucleus. Located in cytosol and nuclear speck. Part of THO complex part of transcription export complex. Colocalizes with chromosome, telomeric region.
Synonyms:	FLJ23445; fSAP24; hTREX30; NIF3L1BP1


[View online »](#)

**Product images:**


Western blot analysis of various lysates using THOC7 Rabbit pAb (TA382507) at 1:3000 dilution.

Secondary antibody: HRP-conjugated Goat anti-Rabbit IgG (H+L) (AS014) at 1:10000 dilution.

Lysates/proteins: 25µg per lane.

Blocking buffer: 3% nonfat dry milk in TBST.

Detection: ECL Basic Kit (RM00020).

Exposure time: 60s.