

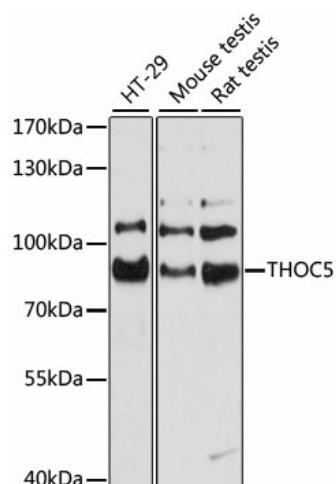
Product datasheet for **TA382505**

THOC5 Rabbit Polyclonal Antibody

Product data:

Product Type:	Primary Antibodies
Applications:	ELISA, WB
Recommended Dilution:	WB, 1:500 - 1:2000 ELISA, Recommended starting concentration is 1 µg/mL. Please optimize the concentration based on your specific assay requirements.
Reactivity:	Human, Mouse, Rat
Modifications:	Unmodified
Host:	Rabbit
Isotype:	IgG
Clonality:	Polyclonal
Formulation:	Buffer: PBS with 0.01% thimerosal, 50% glycerol, pH7.3.
Concentration:	lot specific
Purification:	Affinity purification
Conjugation:	Unconjugated
Storage:	Store at -20°C. Avoid freeze / thaw cycles.
Stability:	Shelf life: one year from despatch.
Predicted Protein Size:	79kDa
Gene Name:	THO complex 5
Database Link:	Entrez Gene 8563 Human Q13769
Background:	Predicted to enable mRNA binding activity. Involved in several processes, including monocyte differentiation; negative regulation of DNA damage checkpoint; and viral mRNA export from host cell nucleus. Located in nucleoplasm. Part of THO complex part of transcription export complex. Colocalizes with chromosome, telomeric region. Implicated in breast carcinoma.
Synonyms:	C22orf19; Fmip; fSAP79; hTREX90; KIAA0983; PK1.3

[View online »](#)

Product images:


Western blot analysis of various lysates using THOC5 Rabbit pAb (TA382505) at 1:3000 dilution. Secondary antibody: HRP-conjugated Goat anti-Rabbit IgG (H+L) (AS014) at 1:10000 dilution. Lysates/proteins: 25µg per lane. Blocking buffer: 3% nonfat dry milk in TBST. Detection: ECL Basic Kit (RM00020). Exposure time: 10s.