

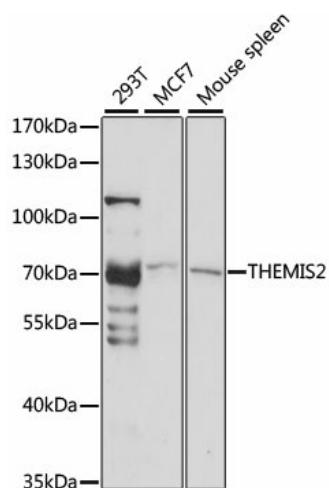
Product datasheet for TA382500S

C1orf38 (THEMIS2) Rabbit Polyclonal Antibody

Product data:

Product Type:	Primary Antibodies
Applications:	ELISA, WB
Recommended Dilution:	WB, 1:200 - 1:2000 ELISA, Recommended starting concentration is 1 µg/mL. Please optimize the concentration based on your specific assay requirements.
Reactivity:	Human, Mouse, Rat
Modifications:	Unmodified
Host:	Rabbit
Isotype:	IgG
Clonality:	Polyclonal
Formulation:	Buffer: PBS with 0.02% sodium azide, 50% glycerol, pH 7.3.
Concentration:	lot specific
Purification:	Affinity purification
Conjugation:	Unconjugated
Storage:	Store at -20°C. Avoid freeze / thaw cycles.
Stability:	Shelf life: one year from despatch.
Predicted Protein Size:	72kDa
Gene Name:	thymocyte selection associated family member 2
Database Link:	Entrez Gene 9473 Human Q5TEJ8
Background:	Predicted to be involved in T cell receptor signaling pathway and regulation of B cell activation. Predicted to be active in cytoplasm and nucleus.
Synonyms:	C1orf38; ICB-1


[View online »](#)

Product images:


Western blot analysis of various lysates using THEMIS2 Rabbit pAb ([TA382500S]) at 1:1000 dilution.

Secondary antibody: HRP-conjugated Goat anti-Rabbit IgG (H+L) (AS014) at 1:10000 dilution.

Lysates/proteins: 25µg per lane.

Blocking buffer: 3% nonfat dry milk in TBST.

Detection: ECL Basic Kit (RM00020).

Exposure time: 30s.