

Product datasheet for **TA382491S**

THAP2 Rabbit Polyclonal Antibody

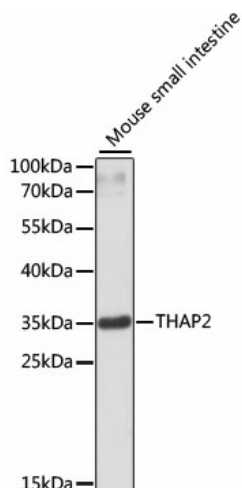
Product data:

Product Type:	Primary Antibodies
Applications:	ELISA, WB
Recommended Dilution:	WB, 1:500 - 1:2000 ELISA, Recommended starting concentration is 1 µg/mL. Please optimize the concentration based on your specific assay requirements.
Reactivity:	Mouse, Rat
Modifications:	Unmodified
Host:	Rabbit
Isotype:	IgG
Clonality:	Polyclonal
Formulation:	Buffer: PBS with 0.02% sodium azide, 50% glycerol, pH 7.3.
Concentration:	lot specific
Purification:	Affinity purification
Conjugation:	Unconjugated
Storage:	Store at -20°C. Avoid freeze / thaw cycles.
Stability:	Shelf life: one year from despatch.
Predicted Protein Size:	26kDa
Gene Name:	THAP domain containing 2
Database Link:	Q9H0W7
Background:	Predicted to enable DNA binding activity and metal ion binding activity. Located in nucleolus.
Synonyms:	DKFZP564I0422

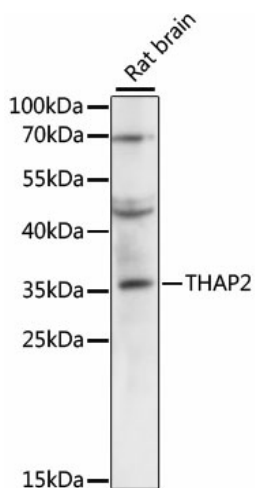


[View online »](#)

Product images:



Western blot analysis of lysates from mouse small intestine



Western blot analysis of lysates from rat brain