

Product datasheet for **TA382475**

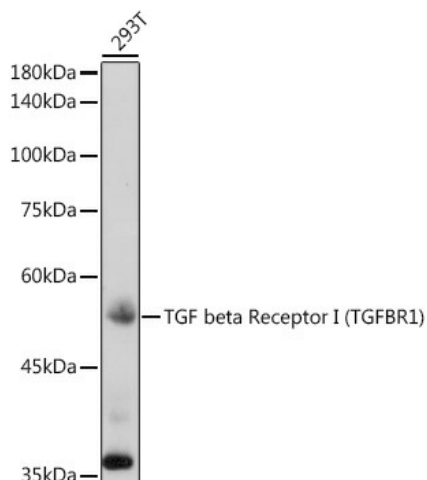
TGF beta Receptor I (TGFB1) Rabbit Polyclonal Antibody

Product data:

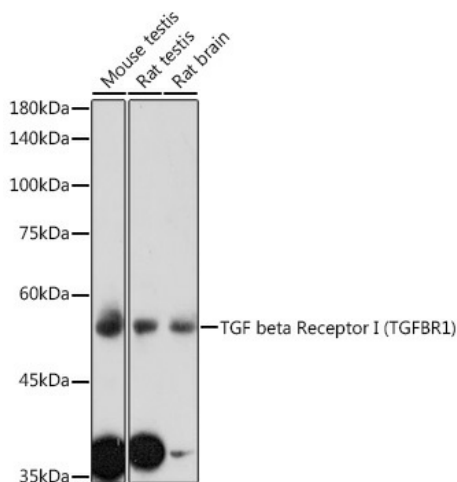
Product Type:	Primary Antibodies
Applications:	WB
Recommended Dilution:	WB,1:500 - 1:2000
Reactivity:	Human, Mouse, Rat
Modifications:	Unmodified
Host:	Rabbit
Isotype:	IgG
Clonality:	Polyclonal
Immunogen:	Recombinant fusion protein containing a sequence corresponding to amino acids 34-124 of human TGF beta Receptor I (TGF beta Receptor I (TGFB1)) (NP_001124388.1).
Formulation:	Buffer: PBS with 0.02% sodium azide,50% glycerol,pH7.3.
Concentration:	lot specific
Purification:	Affinity purification
Conjugation:	Unconjugated
Storage:	Store at -20°C. Avoid freeze / thaw cycles.
Stability:	Shelf life: one year from despatch.
Predicted Protein Size:	47kDa/55kDa/56kDa
Gene Name:	transforming growth factor beta receptor 1
Database Link:	Entrez Gene 7046 Human P36897
Background:	The protein encoded by this gene forms a heteromeric complex with type II TGF-beta receptors when bound to TGF-beta, transducing the TGF-beta signal from the cell surface to the cytoplasm. The encoded protein is a serine/threonine protein kinase. Mutations in this gene have been associated with Loays-Dietz aortic aneurysm syndrome (LDAS). Multiple transcript variants encoding different isoforms have been found for this gene.
Synonyms:	AAT5; ACVRLK4; ALK-5; ALK5; LDS1A; LDS2A; SKR4; TbetaR-I; TGFR-1



[View online »](#)

Product images:


Western blot analysis of extracts of 293T cells, using TGF beta Receptor I (TGF beta Receptor I (TGFBRI)) antibody (TA382475) at 1:1000 dilution. | Secondary antibody: HRP Goat Anti-Rabbit IgG (H+L) at 1:10000 dilution. | Lysates/proteins: 25ug per lane. | Blocking buffer: 3% nonfat dry milk in TBST. | Detection: ECL Basic Kit . | Exposure time: 180s.



Western blot analysis of extracts of various cell lines, using TGF beta Receptor I (TGF beta Receptor I (TGFBRI)) antibody (TA382475) at 1:1000 dilution. | Secondary antibody: HRP Goat Anti-Rabbit IgG (H+L) at 1:10000 dilution. | Lysates/proteins: 25ug per lane. | Blocking buffer: 3% nonfat dry milk in TBST. | Detection: ECL Enhanced Kit . | Exposure time: 180s.