

## Product datasheet for **TA382445**

### mtTFA (TFAM) Rabbit Polyclonal Antibody

#### Product data:

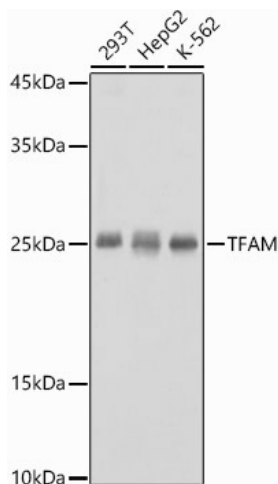
Product Type:	Primary Antibodies
Applications:	ChIP, ICC/IF, IHC, WB
Recommended Dilution:	WB,1:500 - 1:2000 IHC,1:50 - 1:200 IF,1:50 - 1:200 ChIP,1:50 - 1:200
Reactivity:	Human, Mouse, Rat
Modifications:	Unmodified
Host:	Rabbit
Isotype:	IgG
Clonality:	Polyclonal
Immunogen:	Recombinant fusion protein containing a sequence corresponding to amino acids 1-220 of human TFAM (NP_003192.1).
Formulation:	Buffer: PBS with 0.05% proclin300, 50% glycerol, pH7.3.
Concentration:	lot specific
Purification:	Affinity purification
Conjugation:	Unconjugated
Storage:	Store at -20°C. Avoid freeze / thaw cycles.
Stability:	Shelf life: one year from despatch.
Predicted Protein Size:	25kDa/29kDa
Gene Name:	transcription factor A, mitochondrial
Database Link:	<a href="#">Entrez Gene 7019 Human Q00059</a>
Background:	This gene encodes a key mitochondrial transcription factor containing two high mobility group motifs. The encoded protein also functions in mitochondrial DNA replication and repair. Sequence polymorphisms in this gene are associated with Alzheimer's and Parkinson's diseases. There are pseudogenes for this gene on chromosomes 6, 7, and 11. Alternative splicing results in multiple transcript variants.



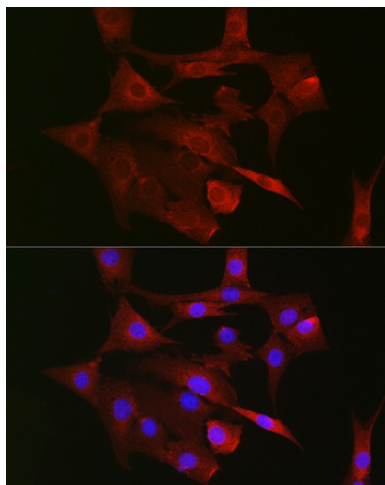
[View online »](#)

Synonyms: MTTF1; MtTF1; MTTFA; mtTFA; OTTHUMP00000019633; TCF6; TCF6L1; TCF6L2; TCF6L3

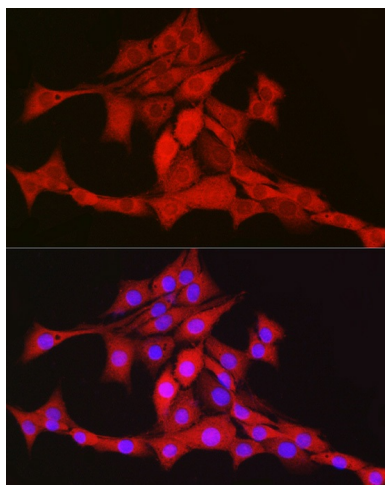
### Product images:



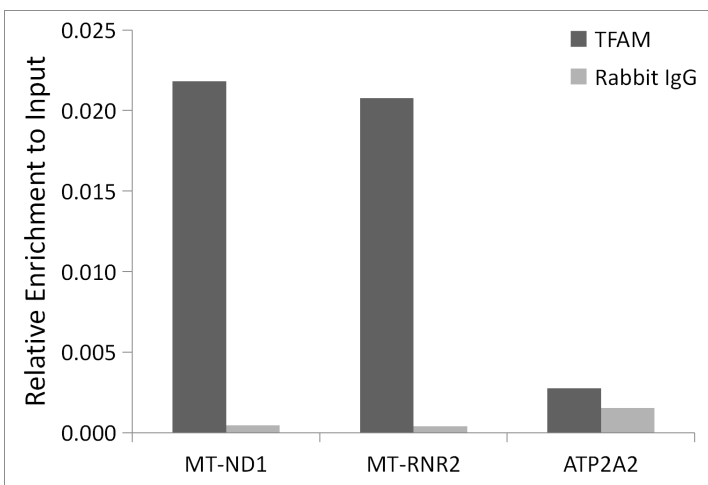
Western blot analysis of extracts of various cell lines, using TFAM antibody (TA382445) at 1:1000 dilution. | Secondary antibody: HRP Goat Anti-Rabbit IgG (H+L) at 1:10000 dilution. | Lysates/proteins: 25ug per lane. | Blocking buffer: 3% nonfat dry milk in TBST. | Detection: ECL Basic Kit . | Exposure time: 1s.



Immunofluorescence analysis of NIH/3T3 cells using TFAM Rabbit pAb (TA382445) at dilution of 1:100 (40x lens). Blue: DAPI for nuclear staining.



Immunofluorescence analysis of PC-12 cells using TFAM Rabbit pAb (TA382445) at dilution of 1:100 (40x lens). Blue: DAPI for nuclear staining.



Chromatin immunoprecipitation analysis of extracts of K-562 cells, using TFAM antibody (TA382445) and rabbit IgG. The amount of immunoprecipitated DNA was checked by quantitative PCR. Histogram was constructed by the ratios of the immunoprecipitated DNA to the input.