

Product datasheet for **TA382441S**

TEX101 Rabbit Polyclonal Antibody

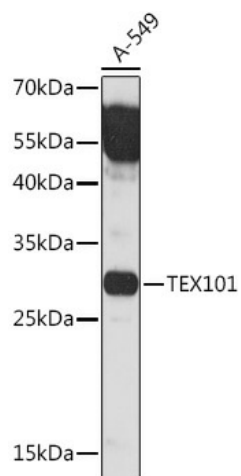
Product data:

Product Type:	Primary Antibodies
Applications:	ELISA, IHC, WB
Recommended Dilution:	WB, 1:500 - 1:2000 IHC-P, 1:50 - 1:200 ELISA, Recommended starting concentration is 1 µg/mL. Please optimize the concentration based on your specific assay requirements.
Reactivity:	Human, Mouse, Rat
Host:	Rabbit
Isotype:	IgG
Clonality:	Polyclonal
Formulation:	Buffer: PBS with 0.02% sodium azide, 50% glycerol, pH 7.3.
Concentration:	lot specific
Purification:	Affinity purification
Conjugation:	Unconjugated
Storage:	Store at -20°C. Avoid freeze / thaw cycles.
Stability:	Shelf life: one year from despatch.
Predicted Protein Size:	27kDa
Gene Name:	testis expressed 101
Database Link:	Entrez Gene 83639 Human Q9BY14
Background:	Predicted to be involved in binding activity of sperm to zona pellucida; flagellated sperm motility; and regulation of flagellated sperm motility. Predicted to be located in acrosomal vesicle; extracellular region; and plasma membrane. Predicted to be active in plasma membrane raft. Predicted to be anchored component of plasma membrane.
Synonyms:	CT131; GTPR867; MGC4766; NYD-SP8; PRO1884; SGRG; SPATA44; TES101RP

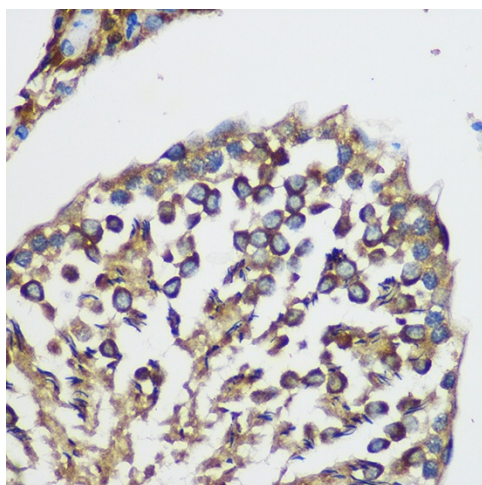


[View online »](#)

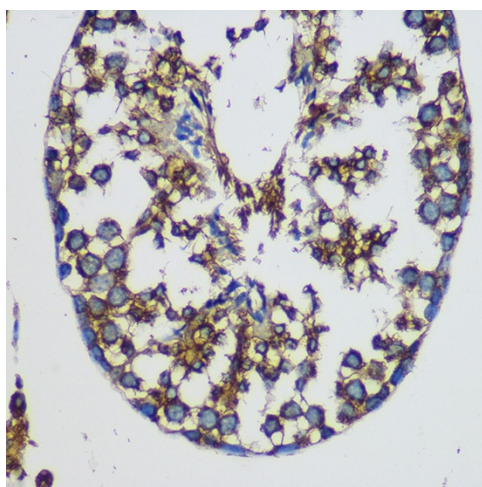
Product images:



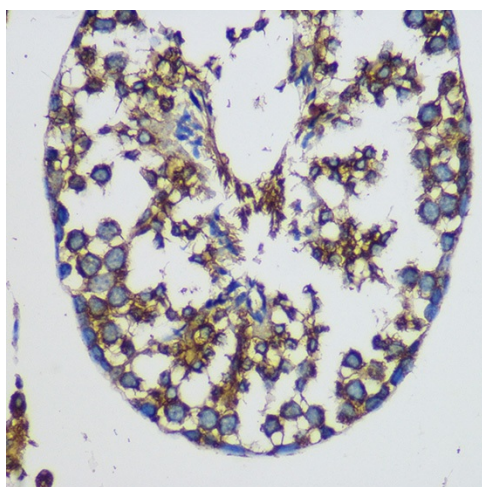
Western blot analysis of lysates from A-549 cells



Immunohistochemistry analysis of paraffin-embedded Human colon using TEX101 Rabbit pAb ([TA382441S]) at dilution of 1:100 (40x lens). Microwave antigen retrieval performed with 0.01M PBS Buffer (pH 7.2) prior to IHC staining.



Immunohistochemistry analysis of paraffin-embedded Rat testis using TEX101 Rabbit pAb ([TA382441]) at dilution of 1:100 (40x lens). Microwave antigen retrieval performed with 0.01M PBS Buffer (pH 7.2) prior to IHC staining.



Immunohistochemistry analysis of paraffin-embedded Mouse testis using TEX101 Rabbit pAb ([TA382441]) at dilution of 1:100 (40x lens). Microwave antigen retrieval performed with 0.01M PBS Buffer (pH 7.2) prior to IHC staining.