

Product datasheet for TA382440S

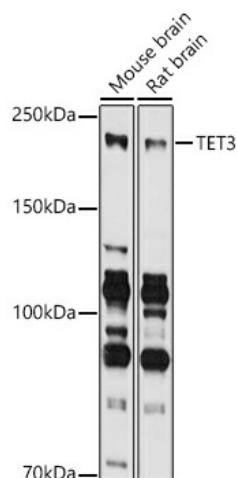
TET3 Rabbit Polyclonal Antibody

Product data:

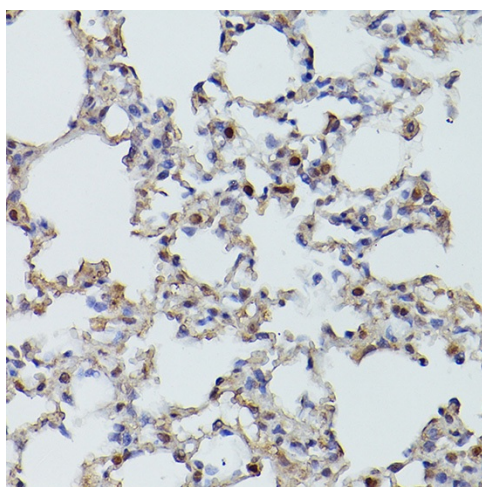
Product Type:	Primary Antibodies
Applications:	ELISA, ICC/IF, IHC, WB
Recommended Dilution:	WB, 1:500 - 1:1000 IHC-P, 1:50 - 1:200 IF/ICC, 1:50 - 1:200 ELISA, Recommended starting concentration is 1 µg/mL. Please optimize the concentration based on your specific assay requirements.
Reactivity:	Human, Mouse, Rat
Modifications:	Unmodified
Host:	Rabbit
Isotype:	IgG
Clonality:	Polyclonal
Formulation:	Buffer: PBS with 0.02% sodium azide, 50% glycerol, pH 7.3.
Concentration:	lot specific
Purification:	Affinity purification
Conjugation:	Unconjugated
Storage:	Store at -20°C. Avoid freeze / thaw cycles.
Stability:	Shelf life: one year from despatch.
Predicted Protein Size:	194kDa
Gene Name:	tet methylcytosine dioxygenase 3
Database Link:	Entrez Gene 200424 Human O43151
Background:	Enables methyl-CpG binding activity and zinc ion binding activity. Involved in histone H3-K4 trimethylation; positive regulation of transcription by RNA polymerase II; and protein O-linked glycosylation. Predicted to be located in cytoplasm and male pronucleus. Predicted to be active in nucleus. Biomarker of esophagus squamous cell carcinoma.
Synonyms:	hCG_40738


[View online »](#)

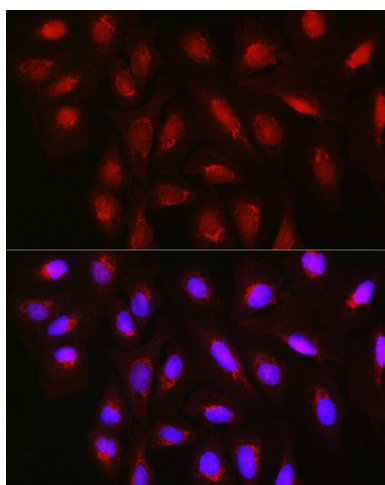
Product images:



Western blot analysis of various lysates using TET3 Rabbit pAb ([TA382440]) at 1:1000 dilution. Secondary antibody: HRP-conjugated Goat anti-Rabbit IgG (H+L) (AS014) at 1:10000 dilution. Lysates/proteins: 25µg per lane. Blocking buffer: 3% nonfat dry milk in TBST. Detection: ECL Enhanced Kit (RM00021). Exposure time: 5s.



Immunohistochemistry analysis of paraffin-embedded Human esophageal using TET3 Rabbit pAb ([TA382440]) at dilution of 1:50 (40x lens). High pressure antigen retrieval performed with 0.01M Citrate Bufferr (pH 6.0) prior to IHC staining.



Immunofluorescence analysis of U2OS cells using TET3 Rabbit pAb ([TA382440]) at dilution of 1:100 (40x lens). Secondary antibody: Cy3-conjugated Goat anti-Rabbit IgG (H+L) (AS007) at 1:500 dilution. Blue: DAPI for nuclear staining.