

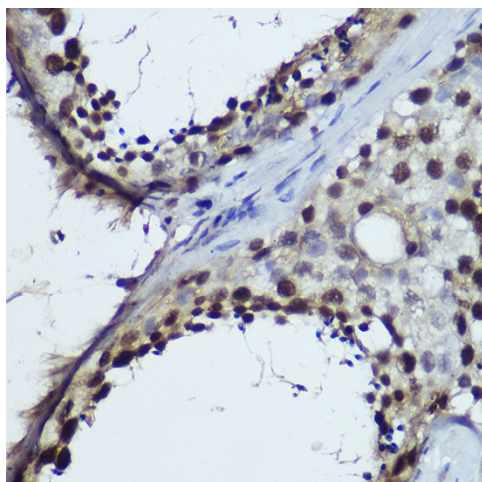
Product datasheet for **TA382430S**

Tet1 Rabbit Polyclonal Antibody

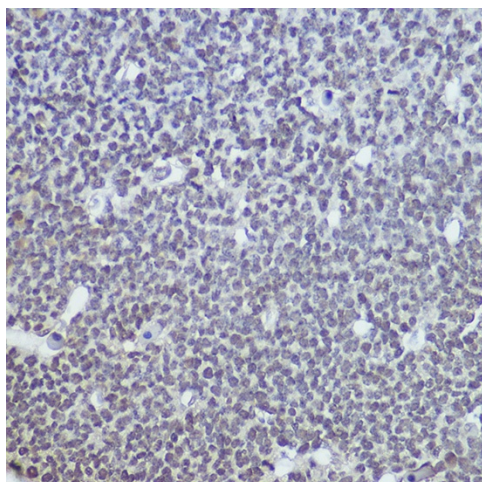
Product data:

Product Type:	Primary Antibodies
Applications:	ELISA, IHC, WB
Recommended Dilution:	WB, 1:500 - 1:2000 IHC-P, 1:50 - 1:200 ELISA, Recommended starting concentration is 1 µg/mL. Please optimize the concentration based on your specific assay requirements.
Reactivity:	Human, Mouse, Rat
Modifications:	Unmodified
Host:	Rabbit
Isotype:	IgG
Clonality:	Polyclonal
Formulation:	Buffer: PBS with 0.02% sodium azide, 50% glycerol, pH 7.3.
Concentration:	lot specific
Purification:	Affinity purification
Conjugation:	Unconjugated
Storage:	Store at -20°C. Avoid freeze / thaw cycles.
Stability:	Shelf life: one year from despatch.
Predicted Protein Size:	219kDa
Gene Name:	tet methylcytosine dioxygenase 1
Database Link:	Entrez Gene 52463 Mouse Q3URK3
Background:	Enables methylcytosine dioxygenase activity. Involved in several processes, including dendrite morphogenesis; inner cell mass cell differentiation; and protein O-linked glycosylation. Acts upstream of or within DNA demethylation; regulation of DNA methylation; and regulation of genetic imprinting. Located in nucleus. Is expressed in several structures, including brain; early conceptus; embryo ectoderm; lower urogenital tract; and reproductive system. Orthologous to human TET1 (tet methylcytosine dioxygenase 1).
Synonyms:	2510010B09Rik; AA517754; BB001228; Cxxc6; D10Ert17e; LCX; mKIAA1676


[View online »](#)

Product images:


Immunohistochemistry analysis of paraffin-embedded Human testis using TET1 Rabbit pAb ([TA382430]) at dilution of 1:100 (40x lens). High pressure antigen retrieval performed with 0.01M Citrate Bufferr (pH 6.0) prior to IHC staining.



Immunohistochemistry analysis of paraffin-embedded Mouse embryos using TET1 Rabbit pAb ([TA382430]) at dilution of 1:100 (40x lens). High pressure antigen retrieval performed with 0.01M Citrate Bufferr (pH 6.0) prior to IHC staining.