

Product datasheet for **TA382422S**

RAP1 (TERF2IP) Rabbit Polyclonal Antibody

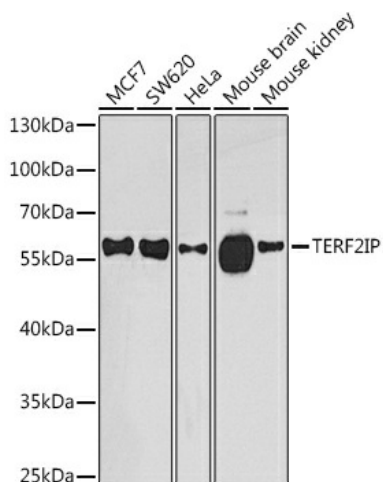
Product data:

Product Type:	Primary Antibodies
Applications:	ELISA, ICC/IF, WB
Recommended Dilution:	WB, 1:500 - 1:1000 IF/ICC, 1:50 - 1:200 ELISA, Recommended starting concentration is 1 µg/mL. Please optimize the concentration based on your specific assay requirements.
Reactivity:	Human, Mouse
Modifications:	Unmodified
Host:	Rabbit
Isotype:	IgG
Clonality:	Polyclonal
Formulation:	Buffer: PBS with 0.02% sodium azide, 50% glycerol, pH 7.3.
Concentration:	lot specific
Purification:	Affinity purification
Conjugation:	Unconjugated
Storage:	Store at -20°C. Avoid freeze / thaw cycles.
Stability:	Shelf life: one year from despatch.
Predicted Protein Size:	44kDa
Gene Name:	TERF2 interacting protein
Database Link:	Entrez Gene 54386 Human Q9NYB0
Background:	Enables G-rich strand telomeric DNA binding activity and phosphatase binding activity. Involved in several processes, including positive regulation of NIK/NF-kappaB signaling; regulation of nucleobase-containing compound metabolic process; and regulation of protein modification process. Located in chromosome, telomeric region; cytosol; and nuclear body. Part of shelterin complex.
Synonyms:	DRIP5; RAP1



[View online »](#)

Product images:



Western blot analysis of various lysates using TERF2IP Rabbit pAb (TA382422) at 1:1000 dilution.

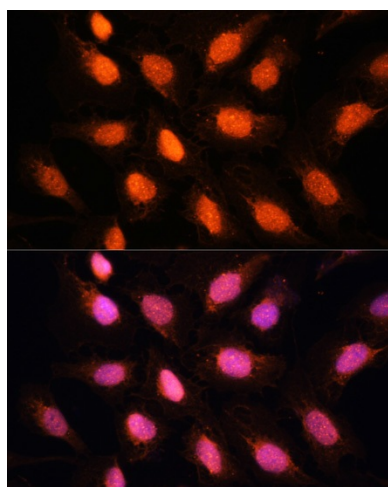
Secondary antibody: HRP-conjugated Goat anti-Rabbit IgG (H+L) (AS014) at 1:10000 dilution.

Lysates/proteins: 25µg per lane.

Blocking buffer: 3% nonfat dry milk in TBST.

Detection: ECL Basic Kit (RM00020).

Exposure time: 90s.



Immunofluorescence analysis of U2OS cells using TERF2IP Rabbit pAb (TA382422) at dilution of 1:100. Secondary antibody: Cy3-conjugated Goat anti-Rabbit IgG (H+L) (AS007) at 1:500 dilution. Blue: DAPI for nuclear staining.