

Product datasheet for **TA382396S**

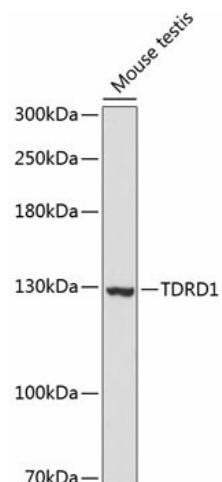
TDRD1 Rabbit Polyclonal Antibody

Product data:

Product Type:	Primary Antibodies
Applications:	ELISA, WB
Recommended Dilution:	WB, 1:1000 - 1:2000 ELISA, Recommended starting concentration is 1 µg/mL. Please optimize the concentration based on your specific assay requirements.
Reactivity:	Mouse
Modifications:	Unmodified
Host:	Rabbit
Isotype:	IgG
Clonality:	Polyclonal
Formulation:	Buffer: PBS with 0.02% sodium azide, 50% glycerol, pH 7.3.
Concentration:	lot specific
Purification:	Affinity purification
Conjugation:	Unconjugated
Storage:	Store at -20°C. Avoid freeze / thaw cycles.
Stability:	Shelf life: one year from despatch.
Predicted Protein Size:	132kDa
Gene Name:	tudor domain containing 1
Database Link:	Q9BXT4
Background:	This gene encodes a protein containing a tudor domain that is thought to function in the suppression of transposable elements during spermatogenesis. The related protein in mouse forms a complex with piRNAs and Piwi proteins to promote methylation and silencing of target sequences. This gene was observed to be upregulated by ETS transcription factor ERG in prostate tumors.
Synonyms:	CT41.1


[View online »](#)

Product images:



Western blot analysis of lysates from mouse testis