

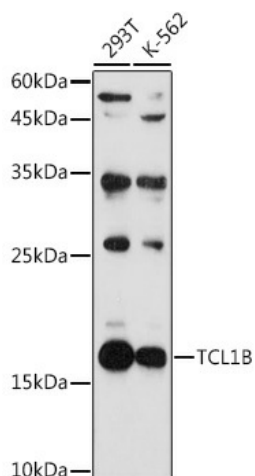
## Product datasheet for **TA382380**

### **TCL1B Rabbit Polyclonal Antibody**

#### **Product data:**

Product Type:	Primary Antibodies
Applications:	ELISA, WB
Recommended Dilution:	WB, 1:500 - 1:1000 ELISA, Recommended starting concentration is 1 µg/mL. Please optimize the concentration based on your specific assay requirements.
Reactivity:	Human, Mouse, Rat
Modifications:	Unmodified
Host:	Rabbit
Isotype:	IgG
Clonality:	Polyclonal
Formulation:	Buffer: PBS with 0.01% thimerosal, 50% glycerol, pH7.3.
Concentration:	lot specific
Purification:	Affinity purification
Conjugation:	Unconjugated
Storage:	Store at -20°C. Avoid freeze / thaw cycles.
Stability:	Shelf life: one year from despatch.
Predicted Protein Size:	15kDa
Gene Name:	T-cell leukemia/lymphoma 1B
Database Link:	<a href="#">Entrez Gene 9623 Human O95988</a>
Background:	Enables protein kinase binding activity and protein serine/threonine kinase activator activity. Involved in positive regulation of peptidyl-serine phosphorylation and positive regulation of protein serine/threonine kinase activity. Part of protein-containing complex.
Synonyms:	SYN-1; TCL1; TML1


[View online »](#)

**Product images:**


Western blot analysis of various lysates using TCL1B Rabbit pAb (TA382380) at 1:1000 dilution. Secondary antibody: HRP-conjugated Goat anti-Rabbit IgG (H+L) (AS014) at 1:10000 dilution. Lysates/proteins: 25µg per lane. Blocking buffer: 3% nonfat dry milk in TBST. Detection: ECL Basic Kit (RM00020). Exposure time: 90s.