

## Product datasheet for **TA382378S**

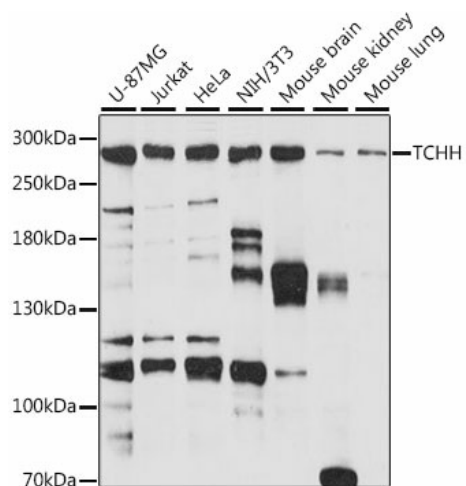
### Trichohyalin (TCHH) Rabbit Polyclonal Antibody

#### Product data:

Product Type:	Primary Antibodies
Applications:	ELISA, WB
Recommended Dilution:	WB, 1:500 - 1:2000 ELISA, Recommended starting concentration is 1 µg/mL. Please optimize the concentration based on your specific assay requirements.
Reactivity:	Human, Mouse
Modifications:	Unmodified
Host:	Rabbit
Isotype:	IgG
Clonality:	Polyclonal
Formulation:	Buffer: PBS with 0.02% sodium azide, 50% glycerol, pH 7.3.
Concentration:	lot specific
Purification:	Affinity purification
Conjugation:	Unconjugated
Storage:	Store at -20°C. Avoid freeze / thaw cycles.
Stability:	Shelf life: one year from despatch.
Predicted Protein Size:	254kDa
Gene Name:	trichohyalin
Database Link:	<a href="#">Entrez Gene 7062 Human Q07283</a>
Background:	The protein encoded by this gene forms crosslinked complexes with itself and keratin intermediate filaments to provide mechanical strength to the hair follicle inner root sheath. The encoded protein also is important for structural integrity of the filiform papillae of the tongue. Defects in this gene are a cause of uncombable hair syndrome.
Synonyms:	MGC157889; MGC157890; THH; THL; TRHY; trichohyalin



[View online »](#)

**Product images:**


Western blot analysis of various lysates using TCHH Rabbit pAb (TA382378) at 1:1000 dilution. Secondary antibody: HRP-conjugated Goat anti-Rabbit IgG (H+L) (AS014) at 1:10000 dilution. Lysates/proteins: 25µg per lane. Blocking buffer: 3% nonfat dry milk in TBST. Detection: ECL Basic Kit (RM00020). Exposure time: 60s.