

Product datasheet for **TA382350S**

TBRG4 Rabbit Polyclonal Antibody

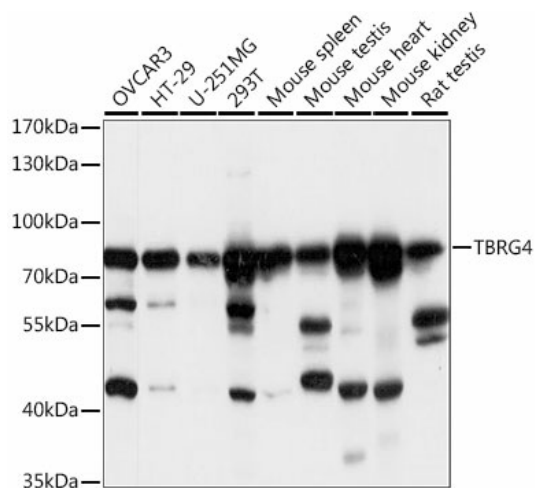
Product data:

Product Type:	Primary Antibodies
Applications:	ELISA, ICC/IF, WB
Recommended Dilution:	WB, 1:500 - 1:2000 IF/ICC, 1:50 - 1:200 ELISA, Recommended starting concentration is 1 µg/mL. Please optimize the concentration based on your specific assay requirements.
Reactivity:	Human, Mouse, Rat
Modifications:	Unmodified
Host:	Rabbit
Isotype:	IgG
Clonality:	Polyclonal
Formulation:	PBS with 0.05% proclin300, 50% glycerol, pH7.3.
Concentration:	lot specific
Purification:	Affinity purification
Conjugation:	Unconjugated
Storage:	Store at -20°C. Avoid freeze / thaw cycles.
Stability:	Shelf life: one year from despatch.
Predicted Protein Size:	71kDa
Gene Name:	transforming growth factor beta regulator 4
Database Link:	Entrez Gene 9238 Human Q969Z0
Background:	Enables RNA binding activity. Involved in mitochondrial mRNA processing and regulation of mitochondrial mRNA stability. Located in mitochondrial matrix.
Synonyms:	CPR2; FASTKD4; H_TD2522F11.8; KIAA0948; OTTHUMP00000159556

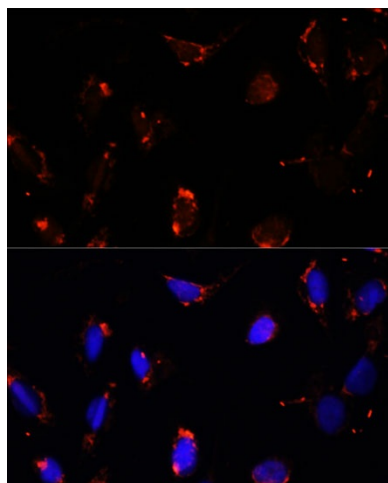


[View online »](#)

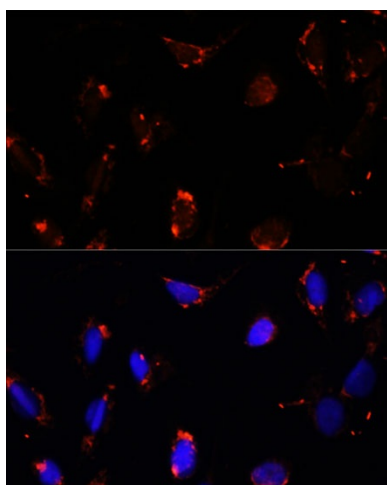
Product images:



Western blot analysis of lysates from HepG2 cells



Immunofluorescence analysis of L929 cells using TBRG4 Rabbit pAb ([TA382350]) at dilution of 1:100. Secondary antibody: Cy3-conjugated Goat anti-Rabbit IgG (H+L) (AS007) at 1:500 dilution. Blue: DAPI for nuclear staining.



Immunofluorescence analysis of U-2 OS cells using TBRG4 Rabbit pAb (TA382350) at dilution of 1:100. Secondary antibody: Cy3-conjugated Goat anti-Rabbit IgG (H+L) (AS007) at 1:500 dilution. Blue: DAPI for nuclear staining.