

Product datasheet for **TA382329S**

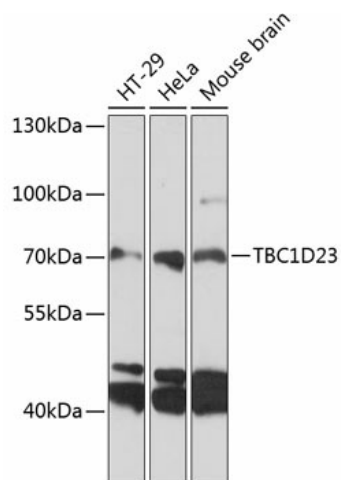
TBC1D23 Rabbit Polyclonal Antibody

Product data:

Product Type:	Primary Antibodies
Applications:	ELISA, WB
Recommended Dilution:	WB, 1:500 - 1:2000 ELISA, Recommended starting concentration is 1 µg/mL. Please optimize the concentration based on your specific assay requirements.
Reactivity:	Human, Mouse
Modifications:	Unmodified
Host:	Rabbit
Isotype:	IgG
Clonality:	Polyclonal
Formulation:	Buffer: PBS with 0.02% sodium azide, 50% glycerol, pH 7.3.
Concentration:	lot specific
Purification:	Affinity purification
Conjugation:	Unconjugated
Storage:	Store at -20°C. Avoid freeze / thaw cycles.
Stability:	Shelf life: one year from despatch.
Predicted Protein Size:	78kDa
Gene Name:	TBC1 domain family member 23
Database Link:	Entrez Gene 55773 Human Q9NUY8
Background:	Involved in brain development; retrograde transport, endosome to Golgi; and vesicle tethering to Golgi. Located in cytoplasmic vesicle and trans-Golgi network. Colocalizes with WASH complex. Implicated in pontocerebellar hypoplasia.
Synonyms:	4930451A13Rik; AU015720; AU043671; AU043778; D030022P07Rik; RGD1307925; W51689



[View online »](#)

Product images:

Western blot analysis of various lysates using TBC1D23 Rabbit pAb ([TA382329]) at 1:3000 dilution.

Secondary antibody: HRP-conjugated Goat anti-Rabbit IgG (H+L) (AS014) at 1:10000 dilution.

Lysates/proteins: 25µg per lane.

Blocking buffer: 3% nonfat dry milk in TBST.

Detection: ECL Basic Kit (RM00020).

Exposure time: 60s.