

## Product datasheet for **TA382329**

### **TBC1D23 Rabbit Polyclonal Antibody**

#### **Product data:**

Product Type:	Primary Antibodies
Applications:	WB
Recommended Dilution:	WB,1:500 - 1:2000
Reactivity:	Human, Mouse
Modifications:	Unmodified
Host:	Rabbit
Isotype:	IgG
Clonality:	Polyclonal
Immunogen:	Recombinant fusion protein containing a sequence corresponding to amino acids 250-600 of human TBC1D23 (NP_001186127.1).
Formulation:	Buffer: PBS with 0.02% sodium azide,50% glycerol,pH7.3.
Concentration:	lot specific
Purification:	Affinity purification
Conjugation:	Unconjugated
Storage:	Store at -20°C. Avoid freeze / thaw cycles.
Stability:	Shelf life: one year from despatch.
Predicted Protein Size:	76kDa/78kDa
Gene Name:	TBC1 domain family member 23
Database Link:	<a href="#">Entrez Gene 55773 Human Q9NUY8</a>



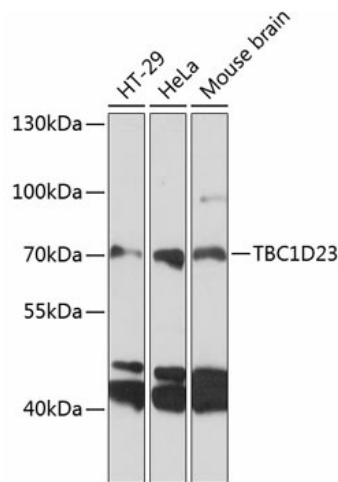
[View online »](#)

**Background:**

Putative Rab GTPase-activating protein which plays a role in vesicular trafficking. Involved in endosome-to-Golgi trafficking. Acts as a bridging protein by binding simultaneously to golgins, including GOLGA1 and GOLGA4, located at the trans-Golgi, and to the WASH complex, located on endosome-derived vesicles. Together with WDR11 complex facilitates the golgin-mediated capture of vesicles generated using AP-1. Plays a role in brain development, including in cortical neuron positioning (By similarity. May also be important for neurite outgrowth, possibly through its involvement in membrane trafficking and cargo delivery, 2 processes that are essential for axonal and dendritic growth (By similarity. May act as a general inhibitor of innate immunity signaling, strongly inhibiting multiple TLR and dectin/CLEC7A-signaling pathways. Does not alter initial activation events, but instead affects maintenance of inflammatory gene expression several hours after bacterial lipopolysaccharide (LPS) challenge (By similarity.

**Synonyms:**

4930451A13Rik; AU015720; AU043671; AU043778; D030022P07Rik; RGD1307925; W51689

**Product images:**

Western blot analysis of extracts of various cell lines, using TBC1D23 antibody (TA382329) at 1:3000 dilution. | Secondary antibody: HRP Goat Anti-Rabbit IgG (H+L) at 1:10000 dilution. | Lysates/proteins: 25ug per lane. | Blocking buffer: 3% nonfat dry milk in TBST. | Detection: ECL Basic Kit . | Exposure time: 60s.