

Product datasheet for **TA382323**

TAZ Rabbit Polyclonal Antibody

Product data:

Product Type:	Primary Antibodies
Applications:	WB
Recommended Dilution:	WB,1:1000 - 1:2000
Reactivity:	Human, Mouse, Rat
Modifications:	Unmodified
Host:	Rabbit
Isotype:	IgG
Clonality:	Polyclonal
Immunogen:	Recombinant fusion protein containing a sequence corresponding to amino acids 174-248 of human Tafazzin / TAZ (NP_851830.1).
Formulation:	Buffer: PBS with 0.02% sodium azide,50% glycerol,pH7.3.
Concentration:	lot specific
Purification:	Affinity purification
Conjugation:	Unconjugated
Storage:	Store at -20°C. Avoid freeze / thaw cycles.
Stability:	Shelf life: one year from despatch.
Predicted Protein Size:	25kDa/27kDa/28kDa/29kDa/30kDa/31kDa/33kDa
Gene Name:	tafazzin
Database Link:	Entrez Gene 6901 Human Q16635



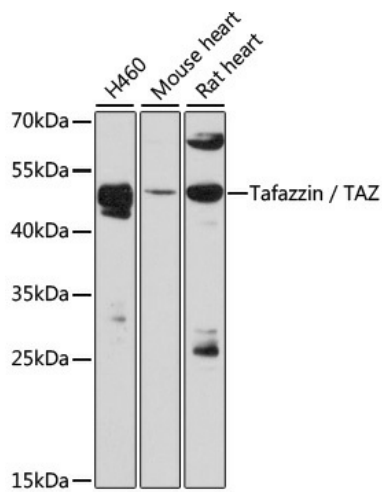
[View online »](#)

Background:

This gene encodes a protein that is expressed at high levels in cardiac and skeletal muscle. Mutations in this gene have been associated with a number of clinical disorders including Barth syndrome, dilated cardiomyopathy (DCM), hypertrophic DCM, endocardial fibroelastosis, and left ventricular noncompaction (LVNC). Multiple transcript variants encoding different isoforms have been described. A long form and a short form of each of these isoforms is produced; the short form lacks a hydrophobic leader sequence and may exist as a cytoplasmic protein rather than being membrane-bound. Other alternatively spliced transcripts have been described but the full-length nature of all these transcripts is not known.

Synonyms:

BTHS; CMD3A; EFE; EFE2; FLJ27390; G4.5; LVNCX; OTTHUMP00000031946; OTTHUMP00000031947; OTTHUMP00000031948; OTTHUMP00000031949; OTTHUMP00000061673; tafazzin; Taz1; XAP-2

Product images:

Western blot analysis of extracts of various cell lines, using Tafazzin / TAZ antibody (TA382323) at 1:3000 dilution. | Secondary antibody: HRP Goat Anti-Rabbit IgG (H+L) at 1:10000 dilution. | Lysates/proteins: 25ug per lane. | Blocking buffer: 3% nonfat dry milk in TBST. | Detection: ECL Basic Kit. | Exposure time: 40s.