

## Product datasheet for **TA382322S**

### **TAX1BP3 Rabbit Polyclonal Antibody**

#### **Product data:**

Product Type:	Primary Antibodies
Applications:	ELISA, WB
Recommended Dilution:	WB, 1:500 - 1:2000 ELISA, Recommended starting concentration is 1 µg/mL. Please optimize the concentration based on your specific assay requirements.
Reactivity:	Human, Mouse
Modifications:	Unmodified
Host:	Rabbit
Isotype:	IgG
Clonality:	Polyclonal
Formulation:	Buffer: PBS with 0.02% sodium azide, 50% glycerol, pH 7.3.
Concentration:	lot specific
Purification:	Affinity purification
Conjugation:	Unconjugated
Storage:	Store at -20°C. Avoid freeze / thaw cycles.
Stability:	Shelf life: one year from despatch.
Predicted Protein Size:	14kDa
Gene Name:	Tax1 binding protein 3
Database Link:	<a href="#">Entrez Gene 30851 Human</a> <a href="#">Q14907</a>

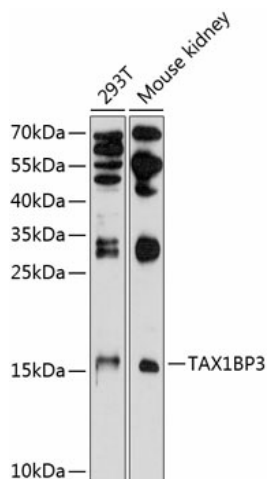
[View online »](#)

**Background:**

This gene encodes a small, highly conserved protein with a single PDZ domain. PDZ (PSD-95/Discs large/ZO-1 homologous) domains promote protein-protein interactions that affect cell signaling, adhesion, protein scaffolding, and receptor and ion transporter functions. The encoded protein interacts with a large number of target proteins that play roles in signaling pathways; for example, it interacts with Rho A and glutaminase L and also acts as a negative regulator of the Wnt/beta-catenin signaling pathway. This protein was first identified as binding to the T-cell leukaemia virus (HTLV1) Tax oncoprotein. Overexpression of this gene has been implicated in altered cancer cell adhesion, migration and metastasis. The encoded protein also modulates the localization and density of inwardly rectifying potassium channel 2.3 (Kir2.3). To date, this protein has been shown to play a role in cell proliferation, development, stress response, and polarization. Alternative splicing results in multiple transcript variants encoding distinct isoforms.

**Synonyms:**

1300011C24Rik; RP23-263M10.10; TIP-1

**Product images:**


Western blot analysis of various lysates using TAX1BP3 Rabbit pAb ([TA382322]) at 1:1000 dilution.

Secondary antibody: HRP-conjugated Goat anti-Rabbit IgG (H+L) (AS014) at 1:10000 dilution.

Lysates/proteins: 25µg per lane.

Blocking buffer: 3% nonfat dry milk in TBST.

Detection: ECL Basic Kit (RM00020).

Exposure time: 90s.