

Product datasheet for **TA382319**

TASL Rabbit Polyclonal Antibody

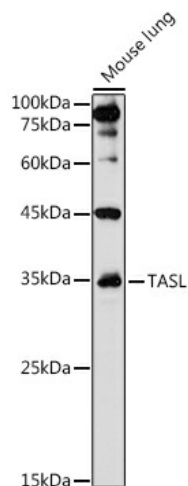
Product data:

Product Type:	Primary Antibodies
Applications:	IHC, WB
Recommended Dilution:	WB,1:500 - 1:2000 IHC,1:50 - 1:200
Reactivity:	Human, Mouse
Modifications:	Unmodified
Host:	Rabbit
Isotype:	IgG
Clonality:	Polyclonal
Immunogen:	Recombinant protein of human TASL.
Formulation:	Buffer: PBS with 0.02% sodium azide,50% glycerol,pH7.3.
Concentration:	lot specific
Purification:	Affinity purification
Conjugation:	Unconjugated
Storage:	Store at -20°C. Avoid freeze / thaw cycles.
Stability:	Shelf life: one year from despatch.
Predicted Protein Size:	33kDa
Gene Name:	chromosome X open reading frame 21
Database Link:	Entrez Gene 80231 Human Q9HAI6
Background:	Innate immune adapter that mediates the recruitment and activation of IRF5 downstream of endolysosomal toll-like receptors TLR7, TLR8 and TLR9. Following recruitment to endolysosome by SLC15A4 downstream of TLR7, TLR8 and TLR9, specifically recruits IRF5 transcription factor via its pLxIS motif, leading to IRF5 activation and subsequent expression of type I interferons. Plays a role in the regulation of endolysosomal pH in immune cells such as B-cells, dendritic cells and monocytes.
Synonyms:	5430427O19Rik; FLJ11577



[View online »](#)

Product images:



Western blot analysis of extracts of Mouse lung, using TASL antibody (TA382319) at 1:1000 dilution. | Secondary antibody: HRP Goat Anti-Rabbit IgG (H+L) at 1:10000 dilution. | Lysates/proteins: 25ug per lane. | Blocking buffer: 3% nonfat dry milk in TBST. | Detection: ECL Basic Kit. | Exposure time: 90s.