

Product datasheet for **TA382314S**

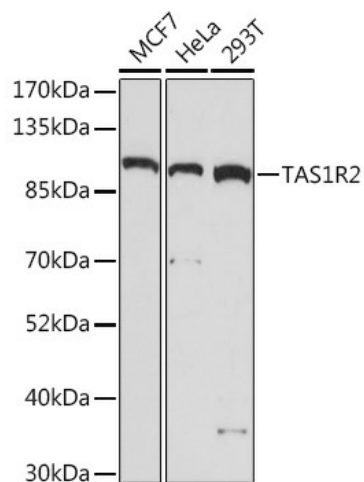
TAS1R2 Rabbit Polyclonal Antibody

Product data:

Product Type:	Primary Antibodies
Applications:	ELISA, WB
Recommended Dilution:	WB, 1:500 - 1:2000 ELISA, Recommended starting concentration is 1 µg/mL. Please optimize the concentration based on your specific assay requirements.
Reactivity:	Human
Host:	Rabbit
Isotype:	IgG
Clonality:	Polyclonal
Formulation:	Buffer: PBS with 0.02% sodium azide, 50% glycerol, pH 7.3.
Concentration:	lot specific
Purification:	Affinity purification
Conjugation:	Unconjugated
Storage:	Store at -20°C. Avoid freeze / thaw cycles.
Stability:	Shelf life: one year from despatch.
Predicted Protein Size:	95kDa
Gene Name:	taste 1 receptor member 2
Database Link:	Entrez Gene 80834 Human Q8TE23
Background:	Contributes to sweet taste receptor activity. Involved in detection of chemical stimulus involved in sensory perception of sweet taste and positive regulation of cytokinesis. Part of sweet taste receptor complex.
Synonyms:	GPR71; T1R2; TR2



[View online »](#)

Product images:


Western blot analysis of various lysates using TAS1R2 Rabbit pAb (TA382314) at 1:1000 dilution.

Secondary antibody: HRP-conjugated Goat anti-Rabbit IgG (H+L) (AS014) at 1:10000 dilution.

Lysates/proteins: 25µg per lane.

Blocking buffer: 3% nonfat dry milk in TBST.

Detection: ECL Basic Kit (RM00020).

Exposure time: 5min.