

Product datasheet for **TA382313**

TAS1R1 Rabbit Polyclonal Antibody

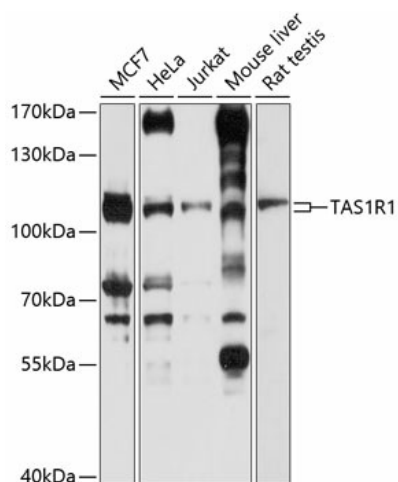
Product data:

Product Type:	Primary Antibodies
Applications:	WB
Recommended Dilution:	WB,1:1000 - 1:4000
Reactivity:	Human, Mouse, Rat
Modifications:	Unmodified
Host:	Rabbit
Isotype:	IgG
Clonality:	Polyclonal
Immunogen:	Recombinant fusion protein containing a sequence corresponding to amino acids 330-567 of human TAS1R1 (NP_619642.2).
Formulation:	Buffer: PBS with 0.02% sodium azide,50% glycerol,pH7.3.
Concentration:	lot specific
Purification:	Affinity purification
Conjugation:	Unconjugated
Storage:	Store at -20°C. Avoid freeze / thaw cycles.
Stability:	Shelf life: one year from despatch.
Predicted Protein Size:	35kDa/52kDa/65kDa/93kDa
Gene Name:	taste 1 receptor member 1
Database Link:	Entrez Gene 80835 Human Q7RTX1
Background:	The protein encoded by this gene is a G protein-coupled receptor and is a component of the heterodimeric amino acid taste receptor T1R1+3. The T1R1+3 receptor responds to L-amino acids but not to D-enantiomers or other compounds. Most amino acids that are perceived as sweet activate T1R1+3, and this activation is strictly dependent on an intact T1R1+3 heterodimer. Multiple transcript variants encoding different isoforms have been found for this gene.
Synonyms:	Gpr70; T1r1; TR1



[View online »](#)

Product images:



Western blot analysis of extracts of various cell lines, using TAS1R1 antibody (TA382313) at 1:1000 dilution. | Secondary antibody: HRP Goat Anti-Rabbit IgG (H+L) at 1:10000 dilution. | Lysates/proteins: 25ug per lane. | Blocking buffer: 3% nonfat dry milk in TBST. | Detection: ECL Basic Kit . | Exposure time: 5s.