

## Product datasheet for **TA382307S**

### **TDP43 (TARDBP) Rabbit Polyclonal Antibody**

#### **Product data:**

|                                |                                                                                                                                                                                                     |
|--------------------------------|-----------------------------------------------------------------------------------------------------------------------------------------------------------------------------------------------------|
| <b>Product Type:</b>           | Primary Antibodies                                                                                                                                                                                  |
| <b>Applications:</b>           | ELISA, ICC/IF, IHC, WB                                                                                                                                                                              |
| <b>Recommended Dilution:</b>   | WB,1:500 - 1:2000<br>IHC-P,1:50 - 1:200<br>IF/ICC,1:50 - 1:200<br>ELISA,Recommended starting concentration is 1 µg/mL. Please optimize the concentration based on your specific assay requirements. |
| <b>Reactivity:</b>             | Human, Mouse, Rat                                                                                                                                                                                   |
| <b>Modifications:</b>          | Unmodified                                                                                                                                                                                          |
| <b>Host:</b>                   | Rabbit                                                                                                                                                                                              |
| <b>Isotype:</b>                | IgG                                                                                                                                                                                                 |
| <b>Clonality:</b>              | Polyclonal                                                                                                                                                                                          |
| <b>Formulation:</b>            | Buffer: PBS with 0.02% sodium azide,50% glycerol,pH7.3.                                                                                                                                             |
| <b>Concentration:</b>          | lot specific                                                                                                                                                                                        |
| <b>Purification:</b>           | Affinity purification                                                                                                                                                                               |
| <b>Conjugation:</b>            | Unconjugated                                                                                                                                                                                        |
| <b>Storage:</b>                | Store at -20°C. Avoid freeze / thaw cycles.                                                                                                                                                         |
| <b>Stability:</b>              | Shelf life: one year from despatch.                                                                                                                                                                 |
| <b>Predicted Protein Size:</b> | 45kDa                                                                                                                                                                                               |
| <b>Gene Name:</b>              | TAR DNA binding protein                                                                                                                                                                             |
| <b>Database Link:</b>          | <a href="#">Entrez Gene 23435 Human Q13148</a>                                                                                                                                                      |



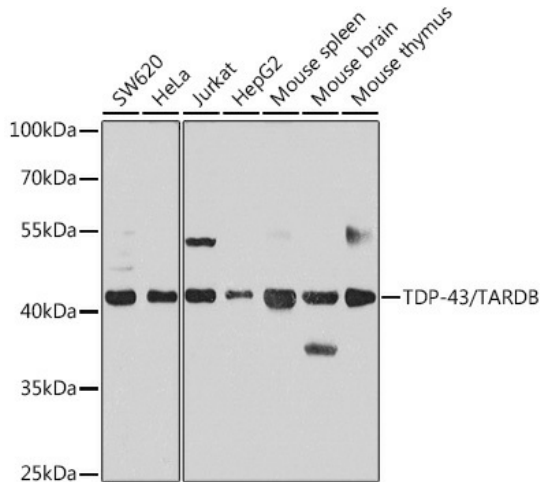
[View online »](#)

**Background:**

HIV-1, the causative agent of acquired immunodeficiency syndrome (AIDS), contains an RNA genome that produces a chromosomally integrated DNA during the replicative cycle. Activation of HIV-1 gene expression by the transactivator Tat is dependent on an RNA regulatory element (TAR) located downstream of the transcription initiation site. The protein encoded by this gene is a transcriptional repressor that binds to chromosomally integrated TAR DNA and represses HIV-1 transcription. In addition, this protein regulates alternate splicing of the CFTR gene. A similar pseudogene is present on chromosome 20.

**Synonyms:**

ALS10; TDP-43

**Product images:**


Western blot analysis of various lysates using TDP-43/TARDB Rabbit pAb ([TA382307]) at 1:1000 dilution.

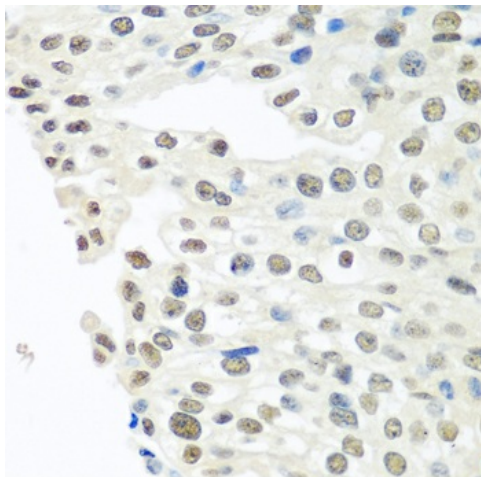
Secondary antibody: HRP-conjugated Goat anti-Rabbit IgG (H+L) (AS014) at 1:10000 dilution.

Lysates/proteins: 25µg per lane.

Blocking buffer: 3% nonfat dry milk in TBST.

Detection: ECL Basic Kit (RM00020).

Exposure time: 10s.



Western blot analysis of various lysates using TDP-43/TARDB Rabbit pAb ([TA382307]) at 1:1000 dilution.

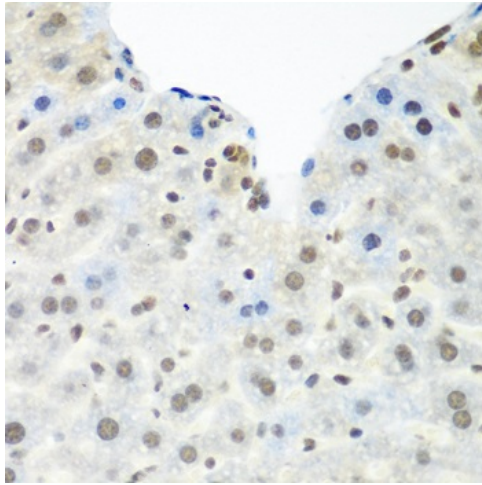
Secondary antibody: HRP-conjugated Goat anti-Rabbit IgG (H+L) (AS014) at 1:10000 dilution.

Lysates/proteins: 25µg per lane.

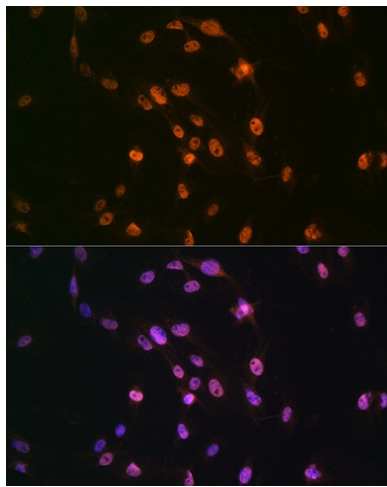
Blocking buffer: 3% nonfat dry milk in TBST.

Detection: ECL Basic Kit (RM00020).

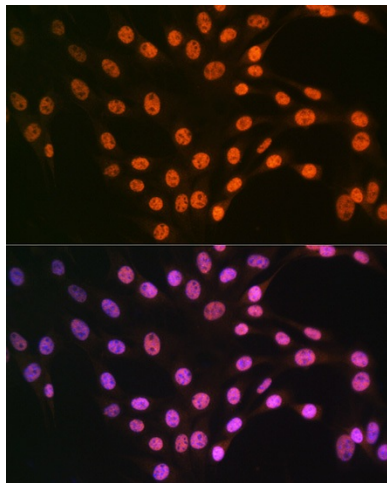
Exposure time: 30s.



Immunohistochemistry analysis of paraffin-embedded Human prostate cancer using TDP-43/TARDB Rabbit pAb ([TA382307]) at dilution of 1:100 (40x lens). Microwave antigen retrieval performed with 0.01M PBS Buffer (pH 7.2) prior to IHC staining.



Immunohistochemistry analysis of paraffin-embedded Mouse liver using TDP-43/TARDB Rabbit pAb ([TA382307]) at dilution of 1:100 (40x lens). Microwave antigen retrieval performed with 0.01M PBS Buffer (pH 7.2) prior to IHC staining.



Immunohistochemistry analysis of paraffin-embedded Human colon using TDP-43/TARDB Rabbit pAb ([TA382307]) at dilution of 1:500 (40x lens). Microwave antigen retrieval performed with 0.01M PBS Buffer (pH 7.2) prior to IHC staining.