

Product datasheet for **TA382295S**

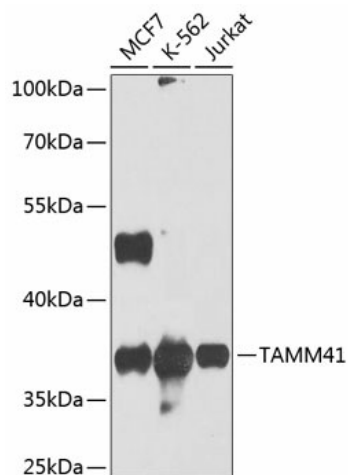
C3ORF31 (TAMM41) Rabbit Polyclonal Antibody

Product data:

Product Type:	Primary Antibodies
Applications:	ELISA, WB
Recommended Dilution:	WB, 1:500 - 1:2000 ELISA, Recommended starting concentration is 1 µg/mL. Please optimize the concentration based on your specific assay requirements.
Reactivity:	Human, Mouse
Modifications:	Unmodified
Host:	Rabbit
Isotype:	IgG
Clonality:	Polyclonal
Formulation:	Buffer: PBS with 0.02% sodium azide, 50% glycerol, pH 7.3.
Concentration:	lot specific
Purification:	Affinity purification
Conjugation:	Unconjugated
Storage:	Store at -20°C. Avoid freeze / thaw cycles.
Stability:	Shelf life: one year from despatch.
Predicted Protein Size:	51kDa
Gene Name:	TAM41 mitochondrial translocator assembly and maintenance homolog
Database Link:	Entrez Gene 132001 Human Q96BW9
Background:	Predicted to enable phosphatidate cytidyltransferase activity. Predicted to be involved in CDP-diacylglycerol biosynthetic process and cardiolipin biosynthetic process. Predicted to be located in mitochondrial inner membrane. Predicted to be extrinsic component of mitochondrial inner membrane. Predicted to be active in mitochondrion.
Synonyms:	1500001M20Rik; TAM41



[View online »](#)

Product images:


Western blot analysis of various lysates using TAMM41 Rabbit pAb (TA382295) at 1:1000 dilution.

Secondary antibody: HRP-conjugated Goat anti-Rabbit IgG (H+L) (AS014) at 1:10000 dilution.

Lysates/proteins: 25µg per lane.

Blocking buffer: 3% nonfat dry milk in TBST.

Detection: ECL Basic Kit (RM00020).

Exposure time: 10s.