

## Product datasheet for **TA382294S**

### Transaldolase 1 (TALDO1) Rabbit Polyclonal Antibody

#### Product data:

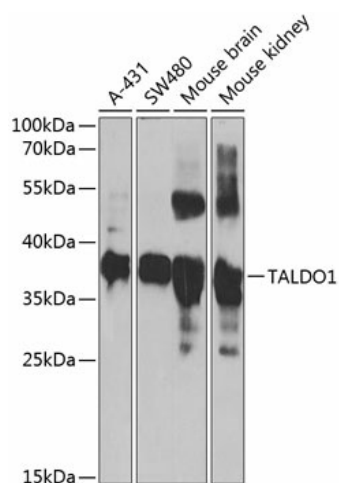
|                         |  |
|-------------------------|--|
| Product Type:           | Primary Antibodies   |
| Applications:           | ICC/IF, WB   |
| Recommended Dilution:   | WB,1:500 - 1:2000<br>IF,1:10 - 1:100   |
| Reactivity:             | Human, Mouse   |
| Modifications:          | Unmodified   |
| Host:                   | Rabbit   |
| Isotype:                | IgG  |
| Clonality:              | Polyclonal   |
| Immunogen:              | Recombinant fusion protein containing a sequence corresponding to amino acids 1-337 of human TALDO1 (NP_006746.1).   |
| Formulation:            | Buffer: PBS with 0.02% sodium azide,50% glycerol,pH7.3.  |
| Concentration:          | lot specific   |
| Purification:           | Affinity purification  |
| Conjugation:            | Unconjugated   |
| Storage:                | Store at -20°C. Avoid freeze / thaw cycles.  |
| Stability:              | Shelf life: one year from despatch.  |
| Predicted Protein Size: | 37kDa  |
| Gene Name:              | transaldolase 1  |
| Database Link:          | <a href="#">Entrez Gene 6888 Human P37837</a>  |
| Background:             | Transaldolase 1 is a key enzyme of the nonoxidative pentose phosphate pathway providing ribose-5-phosphate for nucleic acid synthesis and NADPH for lipid biosynthesis. This pathway can also maintain glutathione at a reduced state and thus protect sulfhydryl groups and cellular integrity from oxygen radicals. The functional gene of transaldolase 1 is located on chromosome 11 and a pseudogene is identified on chromosome 1 but there are conflicting map locations. The second and third exon of this gene were developed by insertion of a retrotransposable element. This gene is thought to be involved in multiple sclerosis. |



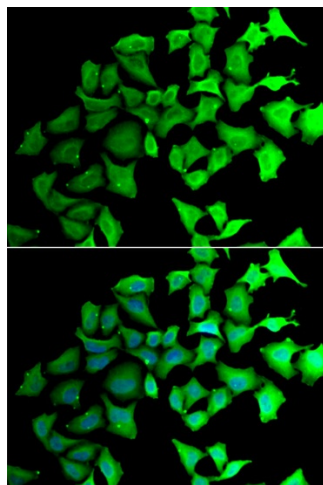
[View online »](#)

Synonyms: Taldo1

### Product images:



Western blot analysis of extracts of various cell lines, using TALDO1 antibody ([TA382294]) at 1:1000 dilution. | Secondary antibody: HRP Goat Anti-Rabbit IgG (H+L) at 1:10000 dilution. | Lysates/proteins: 25ug per lane. | Blocking buffer: 3% nonfat dry milk in TBST. | Detection: ECL Basic Kit . | Exposure time: 30s.



Immunofluorescence analysis of HeLa cells using TALDO1 antibody ([TA382294]). Blue: DAPI for nuclear staining.