

## Product datasheet for **TA382292**

### TAL2 Rabbit Polyclonal Antibody

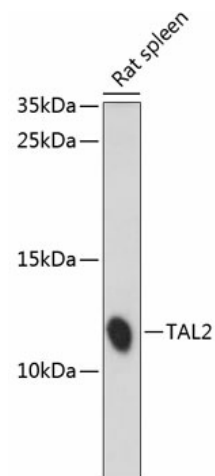
#### Product data:

Product Type:	Primary Antibodies
Applications:	WB
Recommended Dilution:	WB,1:500 - 1:2000
Reactivity:	Rat
Modifications:	Unmodified
Host:	Rabbit
Isotype:	IgG
Clonality:	Polyclonal
Immunogen:	A synthetic peptide corresponding to a sequence within amino acids 20 to the C-terminus of human TAL2 (NP_005412.1).
Formulation:	Buffer: PBS with 0.02% sodium azide,50% glycerol,pH7.3.
Concentration:	lot specific
Purification:	Affinity purification
Conjugation:	Unconjugated
Storage:	Store at -20°C. Avoid freeze / thaw cycles.
Stability:	Shelf life: one year from despatch.
Predicted Protein Size:	12kDa
Gene Name:	T-cell acute lymphocytic leukemia 2
Database Link:	<a href="#">Q16559</a>
Background:	This intronless gene encodes a helix-loop-helix protein. Translocations between this gene on chromosome 9 and the T-cell receptor beta-chain locus on chromosome 7 have been associated with activation of the T-cell acute lymphocytic leukemia 2 gene and T-cell acute lymphoblastic leukemia.
Synonyms:	bHLHa19; Tail2



[View online »](#)

## Product images:



Western blot analysis of extracts of rat spleen, using TAL2 antibody (TA382292) at 1:1000 dilution. | Secondary antibody: HRP Goat Anti-Rabbit IgG (H+L) at 1:10000 dilution. | Lysates/proteins: 25ug per lane. | Blocking buffer: 3% nonfat dry milk in TBST. | Detection: ECL Enhanced Kit. | Exposure time: 10s.