

Product datasheet for **TA382291S**

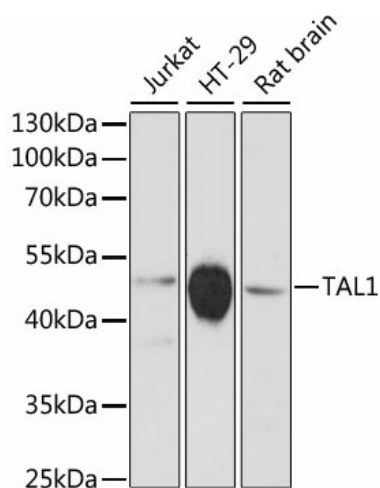
TAL1 Rabbit Polyclonal Antibody

Product data:

Product Type:	Primary Antibodies
Applications:	ELISA, WB
Recommended Dilution:	WB, 1:500 - 1:2000 ELISA, Recommended starting concentration is 1 µg/mL. Please optimize the concentration based on your specific assay requirements.
Reactivity:	Human, Rat
Modifications:	Unmodified
Host:	Rabbit
Isotype:	IgG
Clonality:	Polyclonal
Formulation:	Buffer: PBS with 0.02% sodium azide, 50% glycerol, pH 7.3.
Concentration:	lot specific
Purification:	Affinity purification
Conjugation:	Unconjugated
Storage:	Store at -20°C. Avoid freeze / thaw cycles.
Stability:	Shelf life: one year from despatch.
Predicted Protein Size:	34kDa
Gene Name:	T-cell acute lymphocytic leukemia 1
Database Link:	Entrez Gene 6886 Human P17542
Background:	Enables several functions, including DNA-binding transcription factor activity; E-box binding activity; and histone deacetylase binding activity. Involved in several processes, including myeloid cell differentiation; positive regulation of cellular component organization; and positive regulation of erythrocyte differentiation. Located in chromatin and nucleoplasm. Part of transcription regulator complex. Implicated in acute lymphoblastic leukemia.
Synonyms:	bHLHa17; Scl; SCL/tal-1; tal-1



[View online »](#)

Product images:


Western blot analysis of various lysates using TAL1 Rabbit pAb ([TA382291]) at 1:3000 dilution. Secondary antibody: HRP-conjugated Goat anti-Rabbit IgG (H+L) (AS014) at 1:10000 dilution. Lysates/proteins: 25µg per lane. Blocking buffer: 3% nonfat dry milk in TBST. Detection: ECL Basic Kit (RM00020). Exposure time: 90s.