

## Product datasheet for **TA382262**

### T Rabbit Polyclonal Antibody

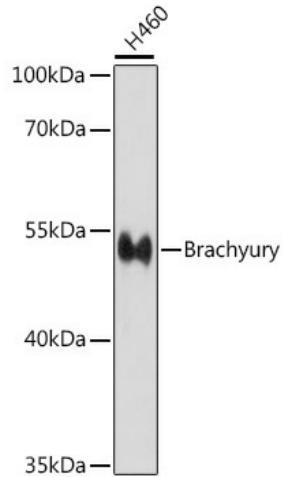
#### Product data:

Product Type:	Primary Antibodies
Applications:	ICC/IF, WB
Recommended Dilution:	WB,1:500 - 1:1000 IF,1:50 - 1:200
Reactivity:	Human, Rat
Modifications:	Unmodified
Host:	Rabbit
Isotype:	IgG
Clonality:	Polyclonal
Immunogen:	Recombinant Brachyury fusion protein containing a sequence corresponding to amino acids 226-435 of human Brachyury (NP_003172.1).
Formulation:	Buffer: PBS with 0.02% sodium azide, 50% glycerol, pH 7.3.
Concentration:	lot specific
Purification:	Affinity purification
Conjugation:	Unconjugated
Storage:	Store at -20°C. Avoid freeze / thaw cycles.
Stability:	Shelf life: one year from despatch.
Predicted Protein Size:	41kDa/47kDa
Gene Name:	T brachyury transcription factor
Database Link:	<a href="#">Entrez Gene 6862 Human Q15178</a>
Background:	The protein encoded by this gene is an embryonic nuclear transcription factor that binds to a specific DNA element, the palindromic T-site. It binds through a region in its N-terminus, called the T-box, and effects transcription of genes required for mesoderm formation and differentiation. The protein is localized to notochord-derived cells. Two transcript variants encoding different isoforms have been found for this gene.
Synonyms:	MGC104817; OTTHUMP00000017588; TF; TFT

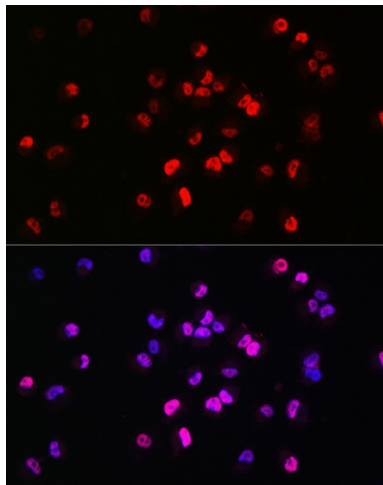


[View online »](#)

Product images:



Western blot analysis of H460 cells, using Brachyury Rabbit pAb (TA382262) aBrachyury 1:1000 dilution. | Secondary antibody: HRP Goat Anti-Rabbit IgG (H+L) aBrachyury 1:10000 dilution. | Lysate/proteins: 25ug per lane. | Blocking buffer: 3% nonfat dry milk in PBS. | Detection: ECL Basic Kit. | Exposure time: 30s.



Immunofluorescence analysis of NCI-H460 cells using Brachyury Rabbit pAb (TA382262) aBrachyury dilution of 1:200 (40x lens). Blue: DAPI for nuclear staining.