

Product datasheet for **TA382255**

Synaptotagmin 3 (SYT3) Rabbit Polyclonal Antibody

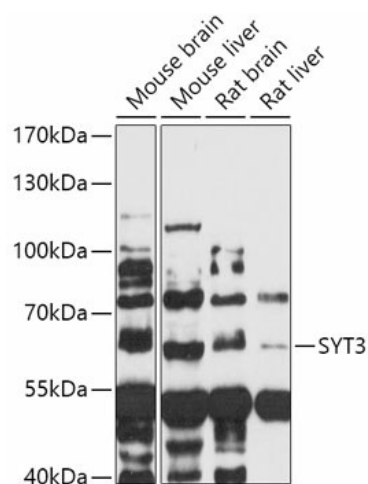
Product data:

Product Type:	Primary Antibodies
Applications:	WB
Recommended Dilution:	WB,1:500 - 1:2000
Reactivity:	Mouse, Rat
Modifications:	Unmodified
Host:	Rabbit
Isotype:	IgG
Clonality:	Polyclonal
Immunogen:	Recombinant fusion protein containing a sequence corresponding to amino acids 449-590 of human SYT3 (NP_115674.1).
Formulation:	Buffer: PBS with 0.02% sodium azide,50% glycerol,pH7.3.
Concentration:	lot specific
Purification:	Affinity purification
Conjugation:	Unconjugated
Storage:	Store at -20°C. Avoid freeze / thaw cycles.
Stability:	Shelf life: one year from despatch.
Gene Name:	synaptotagmin 3
Database Link:	Q9BQG1
Background:	Ca ²⁺ sensor involved in Ca ²⁺ -dependent exocytosis of secretory vesicles through Ca ²⁺ and phospholipid binding to the C2 domain. Ca ²⁺ induces binding of the C2-domains to phospholipid membranes and to assembled SNARE-complexes; both actions contribute to triggering exocytosis (By similarity. Plays a role in dendrite formation by melanocytes.
Synonyms:	DKFZp761O132; SytIII



[View online »](#)

Product images:



Western blot analysis of extracts of various cell lines, using SYT3 antibody (TA382255) at 1:1000 dilution. | Secondary antibody: HRP Goat Anti-Rabbit IgG (H+L) at 1:10000 dilution. | Lysates/proteins: 25ug per lane. | Blocking buffer: 3% nonfat dry milk in TBST. | Detection: ECL Basic Kit . | Exposure time: 90s.