

## Product datasheet for **TA382249**

### Syntrophin alpha 1 (SNTA1) Rabbit Polyclonal Antibody

#### Product data:

Product Type:	Primary Antibodies
Applications:	ICC/IF, WB
Recommended Dilution:	WB,1:500 - 1:2000 IF,1:50 - 1:200
Reactivity:	Human, Mouse, Rat
Modifications:	Unmodified
Host:	Rabbit
Isotype:	IgG
Clonality:	Polyclonal
Immunogen:	Recombinant protein of human Syntrophin alpha 1.
Formulation:	Buffer: PBS with 0.02% sodium azide,0.05% BSA,50% glycerol,pH7.3.
Concentration:	lot specific
Purification:	Affinity purification
Conjugation:	Unconjugated
Storage:	Store at -20°C. Avoid freeze / thaw cycles. Avoid freeze / thaw cycles.   Buffer: PBS with 0.02% sodium azide,0.05% BSA,50% glycerol,pH7.3.
Stability:	Shelf life: one year from despatch.
Predicted Protein Size:	54kDa
Gene Name:	syntrophin alpha 1
Database Link:	<a href="#">Entrez Gene 6640 Human Q13424</a>



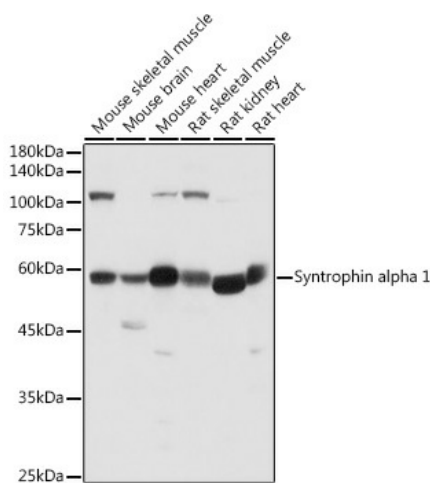
[View online »](#)

**Background:**

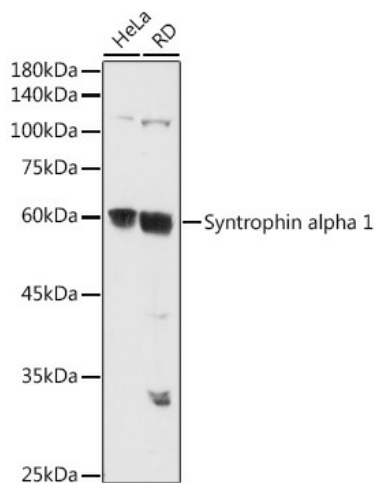
Syntrophins are cytoplasmic peripheral membrane scaffold proteins that are components of the dystrophin-associated protein complex. This gene is a member of the syntrophin gene family and encodes the most common syntrophin isoform found in cardiac tissues. The N-terminal PDZ domain of this syntrophin protein interacts with the C-terminus of the pore-forming alpha subunit (SCN5A) of the cardiac sodium channel Nav1.5. This protein also associates cardiac sodium channels with the nitric oxide synthase-PMCA4b (plasma membrane Ca-ATPase subtype 4b) complex in cardiomyocytes. This gene is a susceptibility locus for Long-QT syndrome (LQT) - an inherited disorder associated with sudden cardiac death from arrhythmia - and sudden infant death syndrome (SIDS). This protein also associates with dystrophin and dystrophin-related proteins at the neuromuscular junction and alters intracellular calcium ion levels in muscle tissue. [provided by RefSeq, Jan 2013]

**Synonyms:**

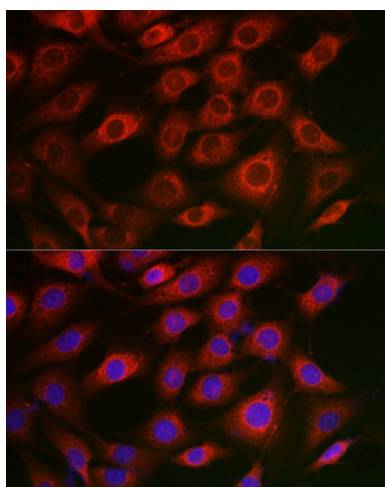
dj1187J4.5; LQT12; SNT1; Syntrophin-1; TACIP1

**Product images:**


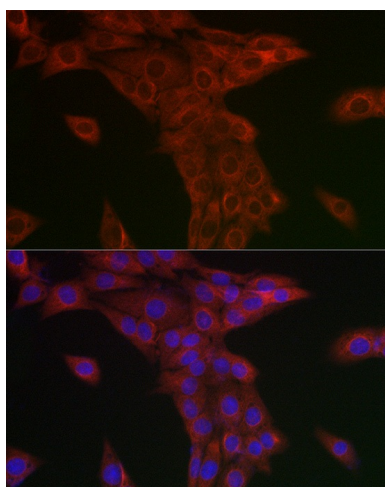
Western blot analysis of extracts of various cell lines, using Syntrophin alpha 1 antibody (TA382249) at 1:500 dilution. | Secondary antibody: HRP Goat Anti-Rabbit IgG (H+L) at 1:10000 dilution. | Lysates/proteins: 25ug per lane. | Blocking buffer: 3% nonfat dry milk in TBST. | Detection: ECL Basic Kit . | Exposure time: 1s.



Western blot analysis of extracts of various cell lines, using Syntrophin alpha 1 antibody (TA382249) at 1:500 dilution. | Secondary antibody: HRP Goat Anti-Rabbit IgG (H+L) at 1:10000 dilution. | Lysates/proteins: 25ug per lane. | Blocking buffer: 3% nonfat dry milk in TBST. | Detection: ECL Basic Kit . | Exposure time: 60s.



Immunofluorescence analysis of NIH/3T3 cells using Syntrophin alpha 1 Rabbit pAb (TA382249) at dilution of 1:50 (40x lens). Blue: DAPI for nuclear staining.



Immunofluorescence analysis of PC-12 cells using Syntrophin alpha 1 Rabbit pAb (TA382249) at dilution of 1:50 (40x lens). Blue: DAPI for nuclear staining.