

Product datasheet for **TA382239S**

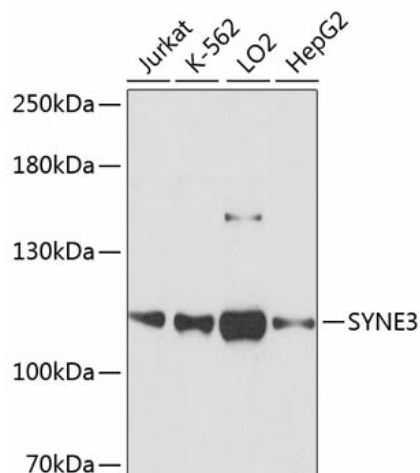
Nesprin3 (SYNE3) Rabbit Polyclonal Antibody

Product data:

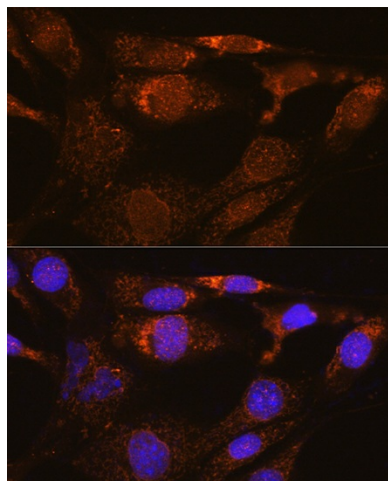
| | |
|-------------------------|--|
| Product Type: | Primary Antibodies |
| Applications: | ELISA, ICC/IF, WB |
| Recommended Dilution: | WB, 1:500 - 1:2000 IF/ICC, 1:50 - 1:200 ELISA, Recommended starting concentration is 1 µg/mL. Please optimize the concentration based on your specific assay requirements. |
| Reactivity: | Human, Mouse |
| Modifications: | Unmodified |
| Host: | Rabbit |
| Isotype: | IgG |
| Clonality: | Polyclonal |
| Formulation: | Buffer: PBS with 0.02% sodium azide, 50% glycerol, pH 7.3. |
| Concentration: | lot specific |
| Purification: | Affinity purification |
| Conjugation: | Unconjugated |
| Storage: | Store at -20°C. Avoid freeze / thaw cycles. |
| Stability: | Shelf life: one year from despatch. |
| Predicted Protein Size: | 112kDa |
| Gene Name: | spectrin repeat containing nuclear envelope family member 3 |
| Database Link: | Entrez Gene 161176 Human Q6ZMZ3 |
| Background: | Enables actin filament binding activity and cytoskeleton-nuclear membrane anchor activity. Involved in cytoskeleton organization; establishment of protein localization to membrane; and regulation of cell shape. Located in nuclear membrane. Part of meiotic nuclear membrane microtubule tethering complex. Biomarker of Huntington's disease. |
| Synonyms: | 4831426I19Rik; nesprin-3; RGD1304563 |



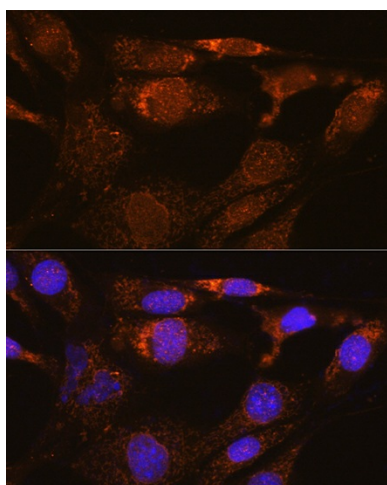
[View online »](#)

Product images:


Western blot analysis of various lysates using SYNE3 Rabbit pAb ([TA382239]) at 1:3000 dilution. Secondary antibody: HRP-conjugated Goat anti-Rabbit IgG (H+L) (AS014) at 1:10000 dilution. Lysates/proteins: 25µg per lane. Blocking buffer: 3% nonfat dry milk in TBST. Detection: ECL Basic Kit (RM00020). Exposure time: 90s.



Immunofluorescence analysis of HeLa cells using SYNE3 Rabbit pAb ([TA382239]) at dilution of 1:100. Secondary antibody: Cy3-conjugated Goat anti-Rabbit IgG (H+L) (AS007) at 1:500 dilution. Blue: DAPI for nuclear staining.



Immunofluorescence analysis of NIH/3T3 cells using SYNE3 Rabbit pAb ([TA382239]) at dilution of 1:100. Secondary antibody: Cy3-conjugated Goat anti-Rabbit IgG (H+L) (AS007) at 1:500 dilution. Blue: DAPI for nuclear staining.