

Product datasheet for **TA382238S**

Nesprin 1 (SYNE1) Rabbit Polyclonal Antibody

Product data:

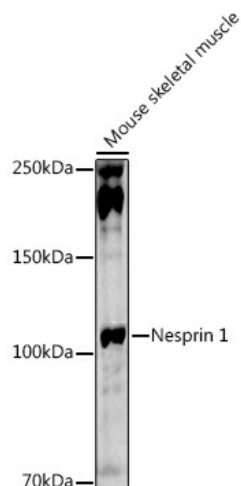
Product Type:	Primary Antibodies
Applications:	ELISA, ICC/IF, IHC, WB
Recommended Dilution:	WB, 1:500 - 1:1000 IHC-P, 1:50 - 1:200 IF/ICC, 1:50 - 1:200 ELISA, Recommended starting concentration is 1 µg/mL. Please optimize the concentration based on your specific assay requirements.
Reactivity:	Human, Mouse, Rat
Modifications:	Unmodified
Host:	Rabbit
Isotype:	IgG
Clonality:	Polyclonal
Formulation:	Buffer: PBS with 0.02% sodium azide, 50% glycerol, pH 7.3.
Concentration:	lot specific
Purification:	Affinity purification
Conjugation:	Unconjugated
Storage:	Store at -20°C. Avoid freeze / thaw cycles.
Stability:	Shelf life: one year from despatch.
Predicted Protein Size:	1011kDa
Gene Name:	spectrin repeat containing nuclear envelope protein 1
Database Link:	Entrez Gene 23345 Human Q8NF91
Background:	This gene encodes a spectrin repeat containing protein expressed in skeletal and smooth muscle, and peripheral blood lymphocytes, that localizes to the nuclear membrane. Mutations in this gene have been associated with autosomal recessive spinocerebellar ataxia 8, also referred to as autosomal recessive cerebellar ataxia type 1 or recessive ataxia of Beauce. Alternatively spliced transcript variants encoding different isoforms have been described.



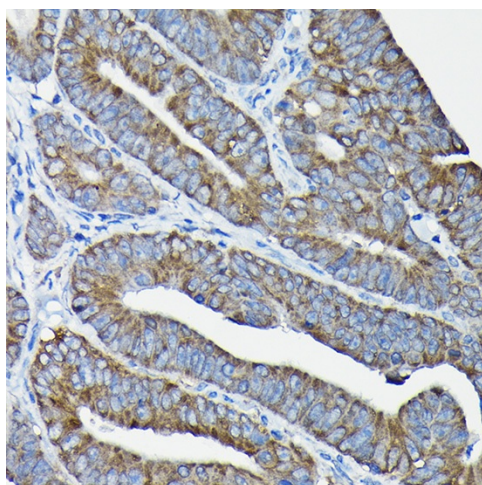
[View online »](#)

Synonyms: 8B; C6orf98; CPG2; dj45H2.2; DKFZp781J13156; EDMD4; enaptin; FLJ30878; FLJ41140; KIAA0796; KIAA1262; KIAA1756; Myne-1; MYNE1; nesprin-1; OTTHUMP00000017438; SCAR8; Syne-1; SYNE-1B

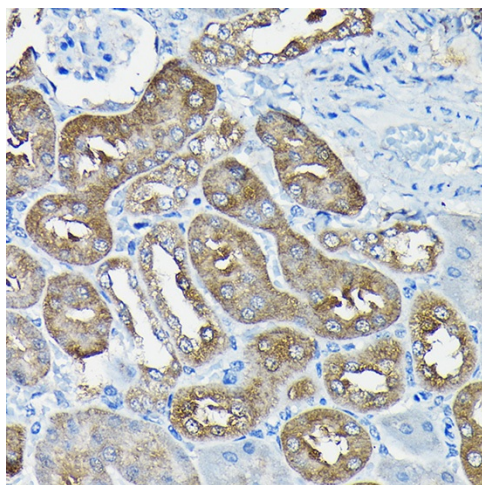
Product images:



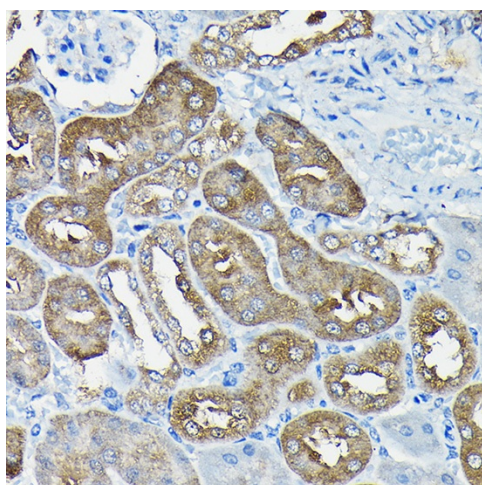
Western blot analysis of lysates from Mouse skeletal muscle



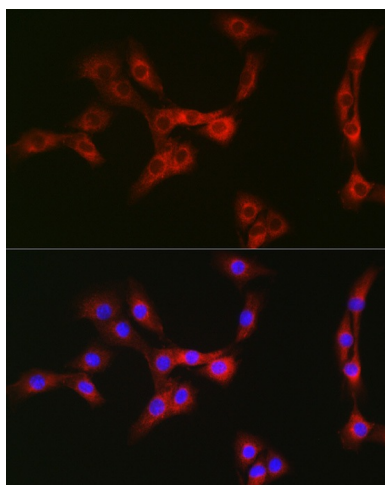
Immunohistochemistry analysis of paraffin-embedded Rat heart using Nesprin 1 Rabbit pAb ([TA382238]) at dilution of 1:100 (40x lens). High pressure antigen retrieval performed with 0.01M Citrate Bufferr (pH 6.0) prior to IHC staining.



Immunohistochemistry analysis of paraffin-embedded Human colon carcinoma using Nesprin 1 Rabbit pAb ([TA382238]) at dilution of 1:100 (40x lens). High pressure antigen retrieval performed with 0.01M Citrate Bufferr (pH 6.0) prior to IHC staining.



Immunohistochemistry analysis of paraffin-embedded Mouse kidney using Nesprin 1 Rabbit pAb ([TA382238]) at dilution of 1:100 (40x lens). High pressure antigen retrieval performed with 0.01M Citrate Bufferr (pH 6.0) prior to IHC staining.



Immunofluorescence analysis of NIH/3T3 cells using Nesprin 1 Rabbit pAb ([TA382238]) at dilution of 1:100 (40x lens). Secondary antibody: Cy3-conjugated Goat anti-Rabbit IgG (H+L) (AS007) at 1:500 dilution. Blue: DAPI for nuclear staining.