

Product datasheet for **TA382223S**

SV2A Rabbit Polyclonal Antibody

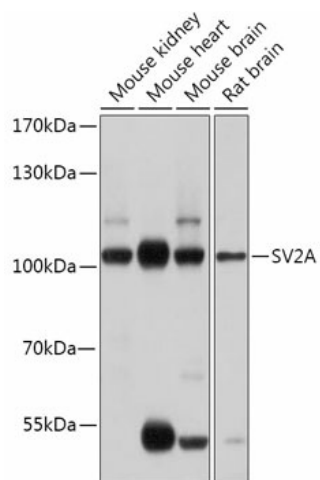
Product data:

Product Type:	Primary Antibodies
Applications:	WB
Recommended Dilution:	WB,1:500 - 1:2000
Reactivity:	Mouse, Rat
Modifications:	Unmodified
Host:	Rabbit
Isotype:	IgG
Clonality:	Polyclonal
Immunogen:	Recombinant fusion protein containing a sequence corresponding to amino acids 356-447 of human SV2A (NP_055664.3).
Formulation:	Buffer: PBS with 0.02% sodium azide,50% glycerol,pH7.3.
Concentration:	lot specific
Purification:	Affinity purification
Conjugation:	Unconjugated
Storage:	Store at -20°C. Avoid freeze / thaw cycles.
Stability:	Shelf life: one year from despatch.
Predicted Protein Size:	83kDa
Gene Name:	synaptic vesicle glycoprotein 2A
Database Link:	Q7L0J3
Background:	The protein encoded by this gene is one of three related synaptic vesicle proteins. The encoded protein may interact with synaptotagmin to enhance low frequency neurotransmission in quiescent neurons.
Synonyms:	KIAA0736; SV2



[View online »](#)

Product images:



Western blot analysis of extracts of various cell lines, using SV2A antibody ([TA382223]) at 1:1000 dilution. | Secondary antibody: HRP Goat Anti-Rabbit IgG (H+L) at 1:10000 dilution. | Lysates/proteins: 25ug per lane. | Blocking buffer: 3% nonfat dry milk in TBST. | Detection: ECL Basic Kit . | Exposure time: 1s.