

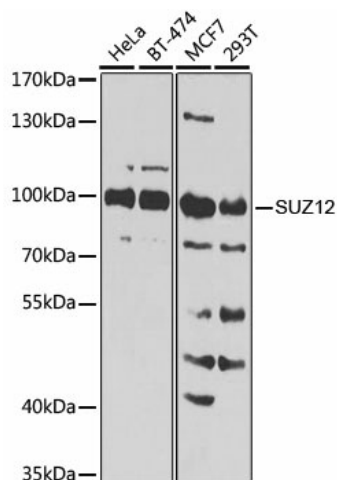
Product datasheet for **TA382222S**

SUZ12 Rabbit Polyclonal Antibody

Product data:

Product Type:	Primary Antibodies
Applications:	ELISA, ICC/IF, IP, WB
Recommended Dilution:	WB, 1:500 - 1:2000 IF/ICC, 1:50 - 1:100 IP, 0.5µg-4µg antibody for 200µg-400µg extracts of whole cells ELISA, Recommended starting concentration is 1 µg/mL. Please optimize the concentration based on your specific assay requirements.
Reactivity:	Human, Mouse, Rat
Modifications:	Unmodified
Host:	Rabbit
Isotype:	IgG
Clonality:	Polyclonal
Formulation:	Buffer: PBS with 0.02% sodium azide, 50% glycerol, pH7.3.
Concentration:	lot specific
Purification:	Affinity purification
Conjugation:	Unconjugated
Storage:	Store at -20°C. Avoid freeze / thaw cycles.
Stability:	Shelf life: one year from despatch.
Predicted Protein Size:	83kDa
Gene Name:	SUZ12 polycomb repressive complex 2 subunit
Database Link:	Entrez Gene 23512 Human Q15022
Background:	This zinc finger gene has been identified at the breakpoints of a recurrent chromosomal translocation reported in endometrial stromal sarcoma. Recombination of these breakpoints results in the fusion of this gene and JAZF1. The protein encoded by this gene contains a zinc finger domain in the C terminus of the coding region.
Synonyms:	CHET9; JJA21; KIAA0160


[View online »](#)

Product images:


Western blot analysis of various lysates using [KO Validated] SUZ12 Rabbit pAb (TA382222) at 1:1000 dilution.

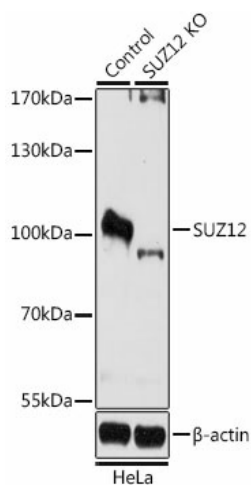
Secondary antibody: HRP-conjugated Goat anti-Rabbit IgG (H+L) (AS014) at 1:10000 dilution.

Lysates/proteins: 25µg per lane.

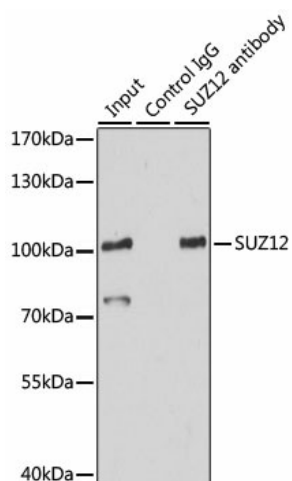
Blocking buffer: 3% nonfat dry milk in TBST.

Detection: ECL Basic Kit (RM00020).

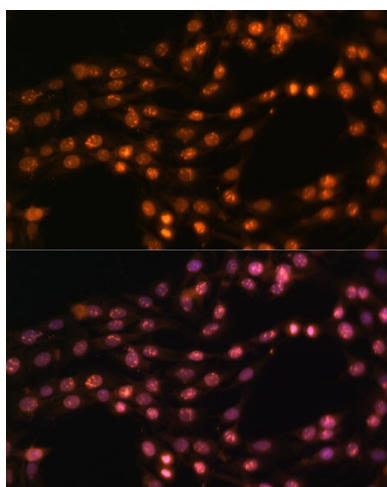
Exposure time: 90s.



Western blot analysis of lysates from wild type (WT) and SUZ12 knockout (KO) HeLa cells



Immunoprecipitation analysis of 200 µg extracts of HeLa cells using 3 µg SUZ12 antibody ([TA382222]). Western blot was performed from the immunoprecipitate using SUZ12 antibody ([TA382222]) at a dilution of 1:500.



Immunofluorescence analysis of C6 cells using [KO Validated] SUZ12 Rabbit pAb ([TA382222]) at dilution of 1:100 (40x lens). Secondary antibody: Cy3-conjugated Goat anti-Rabbit IgG (H+L) (AS007) at 1:500 dilution. Blue: DAPI for nuclear staining.