

## Product datasheet for **TA382220**

### **SURF4 Rabbit Polyclonal Antibody**

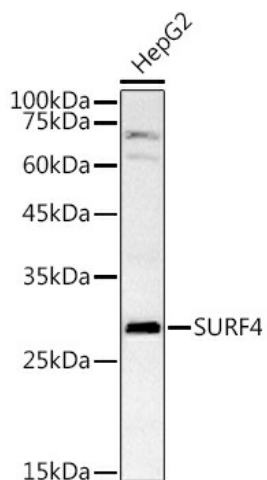
#### **Product data:**

Product Type:	Primary Antibodies
Applications:	ICC/IF, IHC, WB
Recommended Dilution:	WB,1:500 - 1:2000 IHC,1:50 - 1:200 IF,1:50 - 1:200
Reactivity:	Human, Mouse, Rat
Host:	Rabbit
Isotype:	IgG
Clonality:	Polyclonal
Immunogen:	A synthetic peptide corresponding to a sequence within amino acids 50-150 of human SURF4 (NP_001267719.1).
Formulation:	PBS with 0.05% proclin300,50% glycerol,pH7.3.
Concentration:	lot specific
Purification:	Affinity purification
Conjugation:	Unconjugated
Storage:	Store at -20°C. Avoid freeze / thaw cycles.
Stability:	Shelf life: one year from despatch.
Predicted Protein Size:	30kDa
Gene Name:	surfeit 4
Database Link:	<a href="#">Entrez Gene 6836 Human O15260</a>
Background:	This gene is located in the surfeit gene cluster, which is comprised of very tightly linked housekeeping genes that do not share sequence similarity. The encoded protein is a conserved integral membrane protein that interacts with endoplasmic reticulum-Golgi intermediate compartment proteins. Disruption of this gene results in reduced numbers of endoplasmic reticulum-Golgi intermediate compartment clusters and redistribution of coat protein I to the cytosol. Alternate splicing results in multiple transcript variants.
Synonyms:	ERV29; FLJ22993; MGC102753; SURF-4



[View online »](#)

## Product images:



Western blot analysis of extracts of HepG2 cells, using SURF4 antibody (TA382220) at 1:1000 dilution. | Secondary antibody: HRP Goat Anti-Rabbit IgG (H+L) at 1:10000 dilution. | Lysates/proteins: 25ug per lane. | Blocking buffer: 3% nonfat dry milk in TBST. | Detection: ECL Basic Kit . | Exposure time: 30s.