

Product datasheet for **TA382216S**

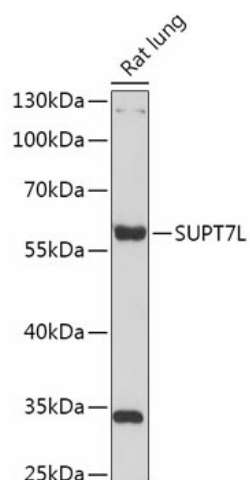
STAF65 gamma (SUPT7L) Rabbit Polyclonal Antibody

Product data:

Product Type:	Primary Antibodies
Applications:	ELISA, WB
Recommended Dilution:	WB, 1:500 - 1:2000 ELISA, Recommended starting concentration is 1 µg/mL. Please optimize the concentration based on your specific assay requirements.
Reactivity:	Human, Mouse, Rat
Modifications:	Unmodified
Host:	Rabbit
Isotype:	IgG
Clonality:	Polyclonal
Formulation:	Buffer: PBS with 0.02% sodium azide, 50% glycerol, pH 7.3.
Concentration:	lot specific
Purification:	Affinity purification
Conjugation:	Unconjugated
Storage:	Store at -20°C. Avoid freeze / thaw cycles.
Stability:	Shelf life: one year from despatch.
Predicted Protein Size:	46kDa
Gene Name:	SPT7-like STAGA complex gamma subunit
Database Link:	Entrez Gene 9913 Human O94864
Background:	SUPT7L is a protein subunit of the human STAGA complex (SPT3; (MIM 602947)/TAF9 (MIM 600822)/GCN5 (MIM 602301) acetyltransferase complex), which is a chromatin-modifying multiprotein complex (Martinez et al., 2001 [PubMed 11564863]).
Synonyms:	gamma; KIAA0764; MGC90306; OTTHUMP00000200854; SPT7L; STAF65; STAF65(gamma); STAF65G; STAF65gamma; SUPT7H



[View online »](#)

Product images:

Western blot analysis of lysates from Rat lung