

Product datasheet for TA382215S

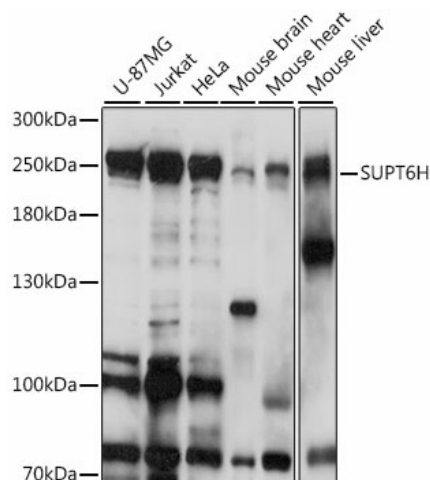
Spt6 (SUPT6H) Rabbit Polyclonal Antibody

Product data:

Product Type:	Primary Antibodies
Applications:	ELISA, ICC/IF, IP, WB
Recommended Dilution:	WB, 1:500 - 1:2000 IF/ICC, 1:50 - 1:200 IP, 0.5µg-4µg antibody for 400µg-600µg extracts of whole cells ELISA, Recommended starting concentration is 1 µg/mL. Please optimize the concentration based on your specific assay requirements.
Reactivity:	Human, Mouse, Rat
Modifications:	Unmodified
Host:	Rabbit
Isotype:	IgG
Clonality:	Polyclonal
Formulation:	Buffer: PBS with 0.02% sodium azide, 50% glycerol, pH7.3.
Concentration:	lot specific
Purification:	Affinity purification
Conjugation:	Unconjugated
Storage:	Store at -20°C. Avoid freeze / thaw cycles.
Stability:	Shelf life: one year from despatch.
Predicted Protein Size:	199kDa
Gene Name:	SPT6 homolog, histone chaperone
Database Link:	Entrez Gene 6830 Human Q7KZ85
Background:	Enables histone binding activity. Involved in negative regulation of histone H3-K27 methylation and positive regulation of transcription elongation from RNA polymerase II promoter. Predicted to be located in nucleoplasm. Predicted to be part of transcription elongation factor complex. Predicted to be active in transcriptionally active chromatin.
Synonyms:	emb-5; hSPT6; KIAA0162; MGC87943; SPT6; SPT6H


[View online »](#)

Product images:



Western blot analysis of various lysates using SUPT6H Rabbit pAb ([TA382215]) at 1:1000 dilution.

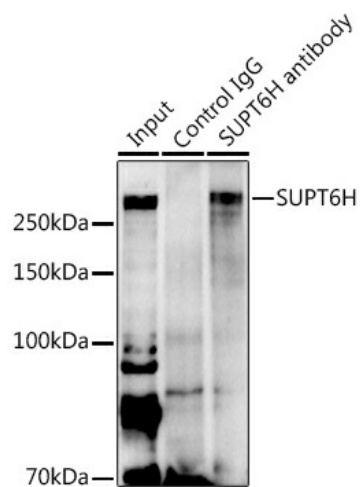
Secondary antibody: HRP-conjugated Goat anti-Rabbit IgG (H+L) (AS014) at 1:10000 dilution.

Lysates/proteins: 25µg per lane.

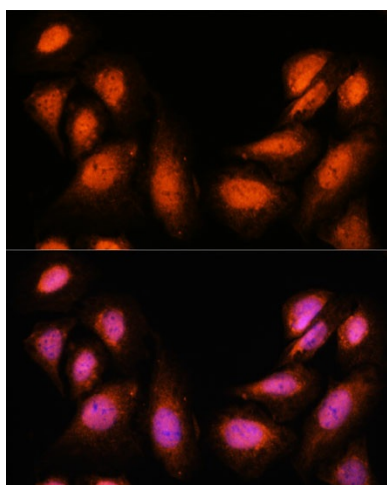
Blocking buffer: 3% nonfat dry milk in TBST.

Detection: ECL Basic Kit (RM00020).

Exposure time: 10s.



Immunoprecipitation analysis of 600 µg extracts of Mouse heart using 3 µg SUPT6H antibody ([TA382215]). Western blot was performed from the immunoprecipitate using SUPT6H antibody ([TA382215]) at a dilution of 1:500.



Immunofluorescence analysis of U-2 OS cells using SUPT6H Rabbit pAb ([TA382215]) at dilution of 1:100. Secondary antibody: Cy3-conjugated Goat anti-Rabbit IgG (H+L) (AS007) at 1:500 dilution. Blue: DAPI for nuclear staining.