

Product datasheet for **TA382212**

SPT3 (SUPT3H) Rabbit Polyclonal Antibody

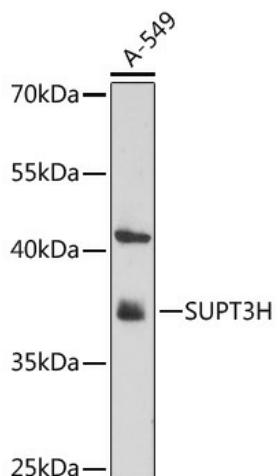
Product data:

Product Type:	Primary Antibodies
Applications:	WB
Recommended Dilution:	WB,1:500 - 1:2000
Reactivity:	Human, Mouse
Host:	Rabbit
Isotype:	IgG
Clonality:	Polyclonal
Immunogen:	Recombinant protein of human SUPT3H.
Formulation:	Buffer: PBS with 0.02% sodium azide,50% glycerol,pH7.3.
Concentration:	lot specific
Purification:	Affinity purification
Conjugation:	Unconjugated
Storage:	Store at -20°C. Avoid freeze / thaw cycles.
Stability:	Shelf life: one year from despatch.
Gene Name:	SPT3 homolog, SAGA and STAGA complex component
Database Link:	Entrez Gene 8464 Human O75486
Background:	Probable transcriptional activator.
Synonyms:	OTTHUMP00000043628; OTTHUMP00000043629; SPT3; SPT3L



[View online »](#)

Product images:



Western blot analysis of extracts of A-549 cells, using SUPT3H antibody (TA382212) at 1:1000 dilution. | Secondary antibody: HRP Goat Anti-Rabbit IgG (H+L) at 1:10000 dilution. | Lysates/proteins: 25ug per lane. | Blocking buffer: 3% nonfat dry milk in TBST. | Detection: ECL Enhanced Kit . | Exposure time: 3min.