

## Product datasheet for **TA382211**

### **FAM48A (SUPT20H) Rabbit Polyclonal Antibody**

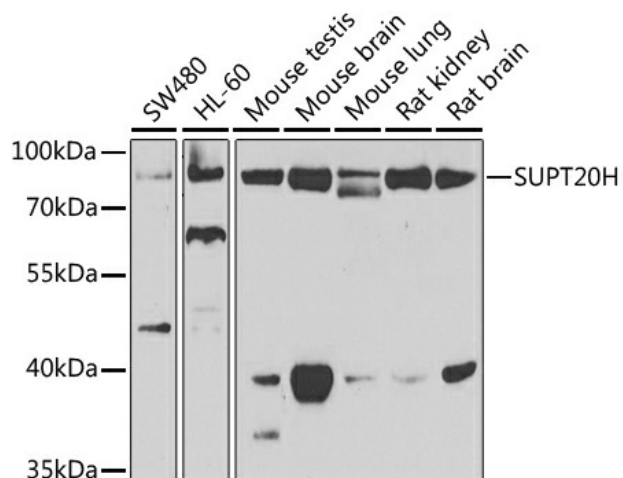
#### **Product data:**

<b>Product Type:</b>	Primary Antibodies
<b>Applications:</b>	IHC, WB
<b>Recommended Dilution:</b>	WB, 1:500 - 1:2000 IHC, 1:50 - 1:200
<b>Reactivity:</b>	Human, Mouse, Rat
<b>Modifications:</b>	Unmodified
<b>Host:</b>	Rabbit
<b>Isotype:</b>	IgG
<b>Clonality:</b>	Polyclonal
<b>Immunogen:</b>	Recombinant fusion protein containing a sequence corresponding to amino acids 580-779 of human SUPT20H (NP_001014308.2).
<b>Formulation:</b>	Buffer: PBS with 0.02% sodium azide, 50% glycerol, pH 7.3.
<b>Concentration:</b>	lot specific
<b>Purification:</b>	Affinity purification
<b>Conjugation:</b>	Unconjugated
<b>Storage:</b>	Store at -20°C. Avoid freeze / thaw cycles.
<b>Stability:</b>	Shelf life: one year from despatch.
<b>Predicted Protein Size:</b>	80kDa/85kDa/88kDa
<b>Gene Name:</b>	SPT20 homolog, SAGA complex component
<b>Database Link:</b>	<a href="#">Entrez Gene 55578 Human Q8NEM7</a>
<b>Background:</b>	Required for MAP kinase p38 (MAPK11, MAPK12, MAPK13 and/or MAPK14 activation during gastrulation. Required for down-regulation of E-cadherin during gastrulation by regulating E-cadherin protein level downstream from NCK-interacting kinase (NIK and independently of the regulation of transcription by FGF signaling and Snail (By similarity. Required for starvation-induced ATG9A trafficking during autophagy.
<b>Synonyms:</b>	bA421P11.4; C13; C13orf19; FAM48A; FP757; P38IP; SPT20



[View online »](#)

## Product images:



Western blot analysis of extracts of various cell lines, using SUPT20H antibody (TA382211) at 1:1000 dilution. | Secondary antibody: HRP Goat Anti-Rabbit IgG (H+L) at 1:10000 dilution. | Lysates/proteins: 25ug per lane. | Blocking buffer: 3% nonfat dry milk in TBST. | Detection: ECL Enhanced Kit. | Exposure time: 90s.