

Product datasheet for **TA382178**

STYXL1 Rabbit Polyclonal Antibody

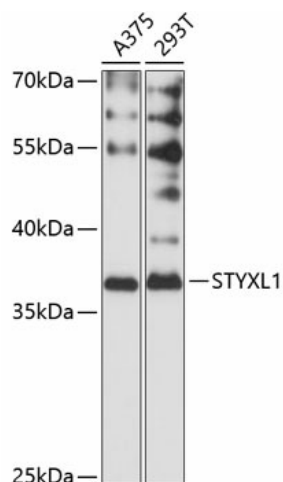
Product data:

Product Type:	Primary Antibodies
Applications:	WB
Recommended Dilution:	WB,1:500 - 1:2000
Reactivity:	Human, Mouse
Modifications:	Unmodified
Host:	Rabbit
Isotype:	IgG
Clonality:	Polyclonal
Immunogen:	Recombinant fusion protein containing a sequence corresponding to amino acids 1-120 of human STYXL1 (NP_001304714.1).
Formulation:	Buffer: PBS with 0.02% sodium azide,50% glycerol,pH7.3.
Concentration:	lot specific
Purification:	Affinity purification
Conjugation:	Unconjugated
Storage:	Store at -20°C. Avoid freeze / thaw cycles.
Stability:	Shelf life: one year from despatch.
Predicted Protein Size:	12kDa/24kDa/28kDa/35kDa/36kDa
Gene Name:	serine/threonine/tyrosine interacting-like 1
Database Link:	Entrez Gene 51657 Human Q9Y6J8
Background:	Catalytically inactive phosphatase. By binding to G3BP1, inhibits the formation of G3BP1-induced stress granules. Does not act by protecting the dephosphorylation of G3BP1 at 'Ser-149'. Inhibits PTPMT1 phosphatase activity. By inhibiting PTPMT1, positively regulates intrinsic apoptosis. May play a role in the formation of neurites during neuronal development.
Synonyms:	DUSP24; MK-STYX; MKSTYX; OTTHUMP00000161016; OTTHUMP00000210191



[View online »](#)

Product images:



Western blot analysis of extracts of various cell lines, using STYXL1 antibody (TA382178) at 1:3000 dilution. | Secondary antibody: HRP Goat Anti-Rabbit IgG (H+L) at 1:10000 dilution. | Lysates/proteins: 25ug per lane. | Blocking buffer: 3% nonfat dry milk in TBST. | Detection: ECL Basic Kit. | Exposure time: 60s.