

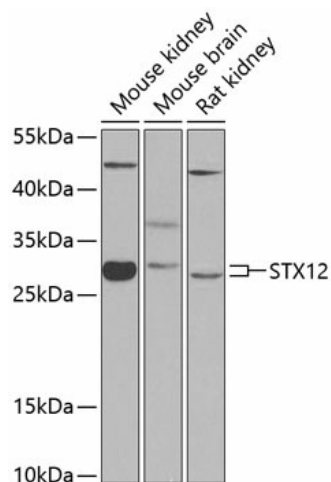
Product datasheet for TA382162S

Syntaxin 12 (STX12) Rabbit Polyclonal Antibody

Product data:

Product Type:	Primary Antibodies
Applications:	ELISA, WB
Recommended Dilution:	WB, 1:500 - 1:2000 ELISA, Recommended starting concentration is 1 µg/mL. Please optimize the concentration based on your specific assay requirements.
Reactivity:	Human, Mouse, Rat
Modifications:	Unmodified
Host:	Rabbit
Isotype:	IgG
Clonality:	Polyclonal
Formulation:	PBS with 0.09% Sodium azide, 50% glycerol, pH7.3.
Concentration:	lot specific
Purification:	Affinity purification
Conjugation:	Unconjugated
Storage:	Store at -20°C. Avoid freeze / thaw cycles.
Stability:	Shelf life: one year from despatch.
Predicted Protein Size:	32kDa
Gene Name:	syntaxin 12
Database Link:	Entrez Gene 23673 Human Q86Y82
Background:	Predicted to enable SNAP receptor activity and SNARE binding activity. Involved in autophagosome assembly; cholesterol efflux; and protein stabilization. Located in several cellular components, including membrane raft; phagocytic vesicle; and phagophore assembly site. Part of SNARE complex. Colocalizes with BLOC-1 complex.
Synonyms:	MGC51957; STX13; STX14


[View online »](#)

Product images:


Western blot analysis of various lysates using STX12 Rabbit pAb ([TA382162]) at 1:1000 dilution. Secondary antibody: HRP-conjugated Goat anti-Rabbit IgG (H+L) (AS014) at 1:10000 dilution. Lysates/proteins: 25µg per lane. Blocking buffer: 3% nonfat dry milk in TBST. Detection: ECL Basic Kit (RM00020). Exposure time: 90s.