

Product datasheet for **TA382148S**

MHF2 (CENPX) Rabbit Polyclonal Antibody

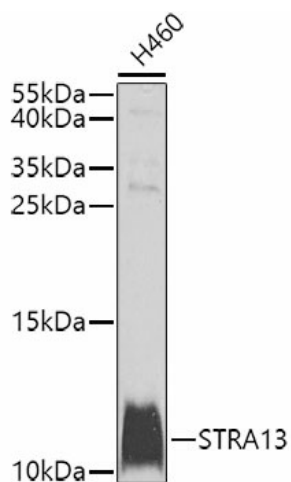
Product data:

Product Type:	Primary Antibodies
Applications:	ELISA, WB
Recommended Dilution:	WB, 1:500 - 1:2000 ELISA, Recommended starting concentration is 1 µg/mL. Please optimize the concentration based on your specific assay requirements.
Reactivity:	Human
Modifications:	Unmodified
Host:	Rabbit
Isotype:	IgG
Clonality:	Polyclonal
Formulation:	Buffer: PBS with 0.02% sodium azide, 50% glycerol, pH 7.3.
Concentration:	lot specific
Purification:	Affinity purification
Conjugation:	Unconjugated
Storage:	Store at -20°C. Avoid freeze / thaw cycles.
Stability:	Shelf life: one year from despatch.
Predicted Protein Size:	9kDa
Gene Name:	stimulated by retinoic acid 13
Database Link:	Entrez Gene 201254 Human A8MT69
Background:	Enables DNA binding activity. Contributes to double-stranded DNA binding activity. Involved in replication fork processing and resolution of meiotic recombination intermediates. Part of FANCM-MHF complex and Fanconi anaemia nuclear complex.
Synonyms:	BHLHB2; CENP-X; CENPX; DEC1; MGC14480



[View online »](#)

Product images:



Western blot analysis of lysates from H460 cells