

## Product datasheet for **TA382130S**

### STK3 Rabbit Polyclonal Antibody

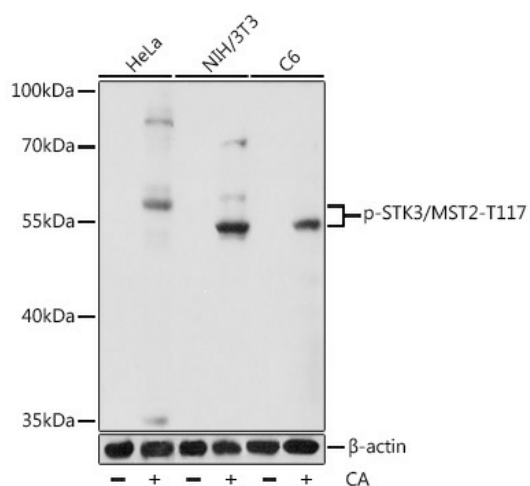
#### Product data:

Product Type:	Primary Antibodies
Applications:	ELISA, WB
Recommended Dilution:	WB, 1:100 - 1:500 ELISA, Recommended starting concentration is 1 µg/mL. Please optimize the concentration based on your specific assay requirements.
Reactivity:	Human, Mouse, Rat
Modifications:	Phospho T117
Host:	Rabbit
Isotype:	IgG
Clonality:	Polyclonal
Formulation:	PBS with 0.05% proclin300, 50% glycerol, pH7.3.
Concentration:	lot specific
Purification:	Affinity purification
Conjugation:	Unconjugated
Storage:	Store at -20°C. Avoid freeze / thaw cycles.
Stability:	Shelf life: one year from despatch.
Predicted Protein Size:	56kDa
Gene Name:	serine/threonine kinase 3
Database Link:	<a href="#">Entrez Gene 6788 Human Q13188</a>
Background:	This gene encodes a serine/threonine protein kinase activated by proapoptotic molecules indicating the encoded protein functions as a growth suppressor. Cleavage of the protein product by caspase removes the inhibitory C-terminal portion. The N-terminal portion is transported to the nucleus where it homodimerizes to form the active kinase which promotes the condensation of chromatin during apoptosis. Multiple transcript variants encoding different isoforms have been found for this gene.
Synonyms:	FLJ90748; KRS1; MST-2; MST2



[View online »](#)

## Product images:



Western blot analysis of lysates from NIH/3T3 cells