

Product datasheet for **TA382119S**

STIP1 Rabbit Polyclonal Antibody

Product data:

Product Type:	Primary Antibodies
Applications:	ICC/IF, IHC, IP, WB
Recommended Dilution:	WB,1:500 - 1:2000 IHC,1:50 - 1:200 IF,1:50 - 1:200 IP,1:20 - 1:50
Reactivity:	Human, Mouse, Rat, Monkey
Modifications:	Unmodified
Host:	Rabbit
Isotype:	IgG
Clonality:	Polyclonal
Immunogen:	Recombinant fusion protein containing a sequence corresponding to amino acids 1-300 of human STIP1 (NP_006810.1).
Formulation:	Buffer: PBS with 0.02% sodium azide,50% glycerol,pH7.3.
Concentration:	lot specific
Purification:	Affinity purification
Conjugation:	Unconjugated
Storage:	Store at -20°C. Avoid freeze / thaw cycles.
Stability:	Shelf life: one year from despatch.
Predicted Protein Size:	59kDa/62kDa/68kDa
Gene Name:	stress induced phosphoprotein 1
Database Link:	Entrez Gene 10963 Human P31948



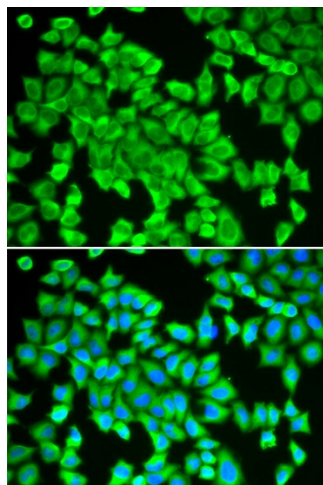
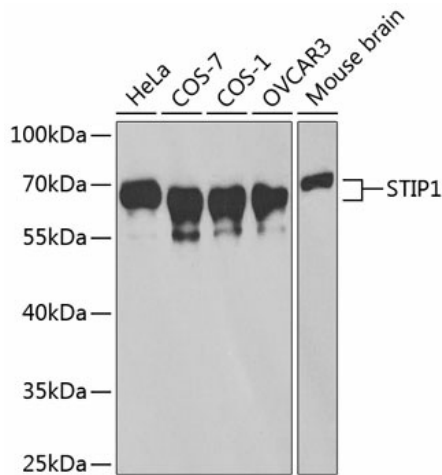
[View online »](#)

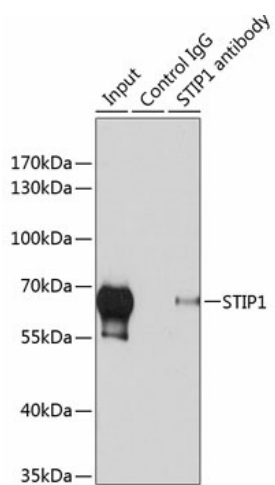
Background:

STIP1 is an adaptor protein that coordinates the functions of HSP70 (see HSPA1A; MIM 140550) and HSP90 (see HSP90AA1; MIM 140571) in protein folding. It is thought to assist in the transfer of proteins from HSP70 to HSP90 by binding both HSP90 and substrate-bound HSP70. STIP1 also stimulates the ATPase activity of HSP70 and inhibits the ATPase activity of HSP90, suggesting that it regulates both the conformations and ATPase cycles of these chaperones (Song and Masison, 2005 [PubMed 16100115]).[supplied by OMIM, Jul 2009]

Synonyms:

HOP; IEF-SSP-3521; P60; STI1; STI1L

Product images:




Immunoprecipitation analysis of 200ug extracts of HeLa cells using 1ug STIP1 antibody ([TA382119]). Western blot was performed from the immunoprecipitate using STIP1 antibody ([TA382119]) at a dilution of 1:1000.