

Product datasheet for TA382112S

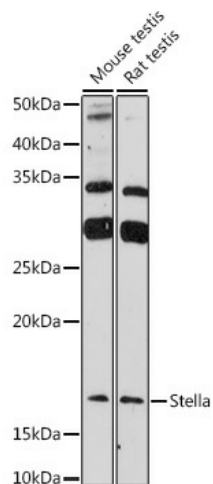
Dppa3 Rabbit Polyclonal Antibody

Product data:

Product Type:	Primary Antibodies
Applications:	ELISA, WB
Recommended Dilution:	WB, 1:500 - 1:1000 ELISA, Recommended starting concentration is 1 µg/mL. Please optimize the concentration based on your specific assay requirements.
Reactivity:	Mouse, Rat
Modifications:	Unmodified
Host:	Rabbit
Isotype:	IgG
Clonality:	Polyclonal
Formulation:	Buffer: PBS with 0.02% sodium azide, 50% glycerol, pH 7.3.
Concentration:	lot specific
Purification:	Affinity purification
Conjugation:	Unconjugated
Storage:	Store at -20°C. Avoid freeze / thaw cycles.
Stability:	Shelf life: one year from despatch.
Predicted Protein Size:	18kDa
Gene Name:	developmental pluripotency-associated 3
Database Link:	Entrez Gene 73708 Mouse Q8QZY3
Background:	Enables methylated histone binding activity. Involved in negative regulation of DNA demethylation; protection of DNA demethylation of female pronucleus; and regulation of genetic imprinting. Acts upstream of or within embryonic cleavage. Located in cytoplasm; female pronucleus; and male pronucleus. Is expressed in several structures, including central nervous system; early conceptus; gonad; hindgut diverticulum; and primordial germ cell. Orthologous to human DPPA3 (developmental pluripotency associated 3).
Synonyms:	Stella; STELLAR


[View online »](#)

Product images:



Western blot analysis of various lysates using Stella Rabbit pAb ([TA382112S]) at 1:1000 dilution. Secondary antibody: HRP-conjugated Goat anti-Rabbit IgG (H+L) (AS014) at 1:10000 dilution. Lysates/proteins: 25µg per lane. Blocking buffer: 3% nonfat dry milk in TBST. Detection: ECL Enhanced Kit (RM00021). Exposure time: 180s.